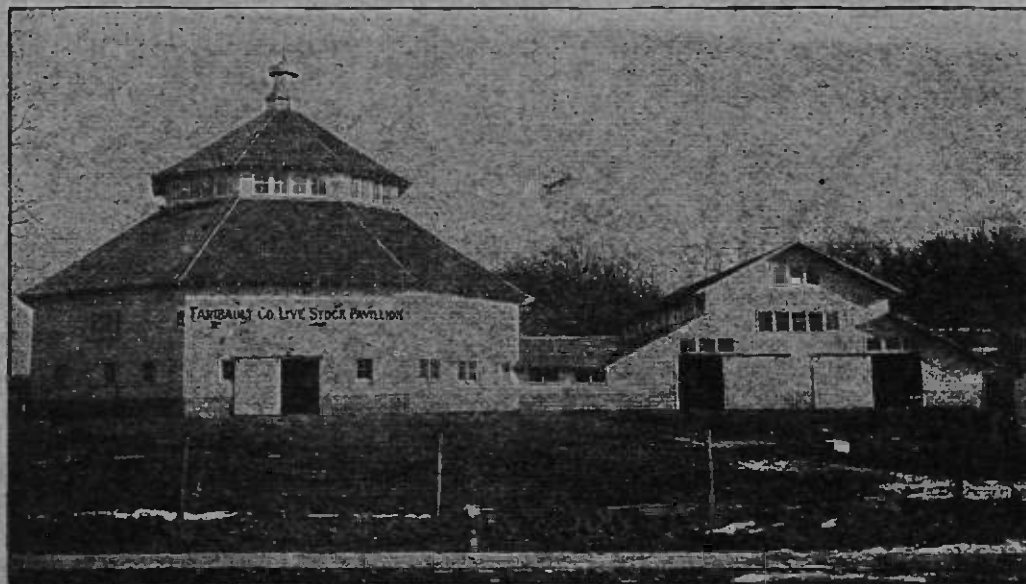


# FARIBAULT COUNTY

Plat Book and Livestock Breeders' Guide



FARIBAULT COUNTY'S LIVESTOCK PAVILION  
BUILT WITH THE FUNDS DONATED BY THE  
FARMERS AND BUSINESS MEN OF FARIBAULT COUNTY

1921

PUBLISHED BY

The Fairmont Map Company

Compiled by FRANKLIN L. SORENSEN  
FAIRMONT, MINNESOTA

25  
STORES

*Service*

25  
STORES

# Kraft-Hawks Co.

Southern Minnesota's  
Leading Clothiers

WINNEBAGO

25  
STORES

*Quality*

25  
STORES

## Citizens State Bank of Wells

CAPITAL AND SURPLUS \$24,000.00

Real Estate, Loans and Insurance

*The Bank of Personal Service*

We are here to Serve in the Interests of  
Wells and Vicinity

WELLS,

MINNESOTA

## WINNEBAGO STATE BANK

A Home Institution Owned and Controlled  
by Home People

Call on Us and We will Help You Solve Your  
Financial Problems

GENERAL BANKING BUSINESS

*Winnebago,*

*Minnesota*

## WELLS NATIONAL BANK

Wells, Minnesota

*The Bank that Appreciates your Business*

C. L. Oleson, *President*

C. E. Anderson, *Ass't. Cash.*

H. W. Buscho, *Vice-Pres.*

Bertha Fletcher, *Ass't. Cash.*

L. N. Olds, *Cashier*

E. F. Schroeder, *Ass't. Cash.*

# WINNEBAGO CITY ENTERPRISE

ESTABLISHED 1893

Nearly Every Home in Faribault County takes it     ::     Stands for everything that is Progressive and Uplifting  
Price \$2.00 per Year     Winnebago, Minnesota     Fred Hadley, Editor



## INDEX

MID-CONTINENT PUBLIC LIBRARY  
Genealogy & Local History Branch  
317 W. Highway 24  
Independence, Mo. 64050

## GE

	Page		Page
Index .....	1	Minnesota Lake Township .....	25
Faribault County writeup .....	3	Rome Township .....	27
Stockbreeders Faribault County .....	5	Emerald Township .....	29
Faribault County Cities, Towns .....	6	Barber Township .....	31
Solid Facts Faribault County .....	7	Lura Township .....	33
County Officials .....	8	Elmore Township .....	35
General Outline Map .....	9	Blue Earth City Township .....	37
Kiester Township .....	11	Prescott Township .....	39
Foster Township .....	13	Delavan Township .....	41
Clark Township .....	15	Pilot Grove Township .....	43
Dunbar Township .....	17	Jo Davis Township .....	45
Seely Township .....	19	Verona Township .....	47
Brush Creek Township .....	21	Winnebago City Township .....	49
Walnut Lake Township .....	23	Last Page Look At It .....	50

*Handwritten:*  
Hendricks  
1- R. A. P.  
45.00

**LUNCH ROOM** in connection  
Fruits, Ice Cream, Sodas, Etc.

## HOTEL FLORENCE

Frank Bartholomew, Prop'r

54 Light, Airy Rooms     ::     Table A la Carte     ::     Service and Prices Right  
"Florence Quality Satisfies"     ::     Try Us     ::     Winnebago, Minn.

W. L. Waldren

FOR A RESTFUL DAY OR SUMMER VACATION

W. R. Waldren

# WALDREN'S PARK

BASS LAKE :: P. O. ADDRESS, WINNEBAGO, MINNESOTA  
Good Fishing, Boating and Bathing : Cottages to Rent : All Rates Reasonable

Bass Lake is Eight Miles Northeast of Winnebago

We are also in the Real Estate business and own and have for sale Village Property, Corn Belt Farms, Northern Minnesota Farms, North and South Dakota, Montana and Canadian Farms. - - - - - LET US KNOW YOUR WANTS

"QUALITY"

"MILEAGE"

"SERVICE"

## WINNEBAGO VULCANIZING COMPANY

Goodyear, Brunswick, United States Tires

Phone Number 6

Winnebago, Minn.

REAL ESTATE

INSURANCE

S. C. MOORE, Winnebago, Minnesota

Makes a specialty of selling Southern Minnesota Farms; Twenty-Pay NEW YORK LIFE Policies; Fire, Lightning and Tornado Policies in the AMERICAN, of Newark, N. J.

# NEW PALACE THEATRE

SOUTHERN MINNESOTA'S FINEST PLAY HOUSE

BLUE EARTH, MINN.

Performances 7:30 and 9:00 p. m.

V. B. Valleau, Inc., Owner

## WELLS FLOUR AND MILLING CO.

Home of ETHAN ALLEN FLOUR—The Best Flour—Try it  
WELLS, MINNESOTA



# FARIBAULT COUNTY'S ADVANTAGES

Faribault County claims consideration upon its superiority as an agricultural region, its scenic, climate and social advantages.

**HISTORY**—Faribault county established February 20, 1855, was named for Jean Baptiste Faribault, a Frenchman, who was engaged through the greater part of his life as a trader among the Indians. He first worked for the Northwest Fur Company but later went into business for himself. He was born at Berthier, Quebec, Canada in 1774, and came to the Northwest in 1798. He died August 20, 1860, at the home of his daughter in Faribault, Minn. a city founded, at first as a Sioux trading post, by his eldest son, Alexander Faribault, for whom it was named.

**GEOGRAPHY**—In the southern tier of Minnesota counties, abutting on Iowa, midway between Wisconsin and South Dakota, thirty miles east and west, twenty-four miles north and south, containing twenty townships. It contains a dozen meandered lakes and several small streams besides the Blue Earth River. Gently rolling prairie, no rough or broken areas, natural timber along shores of lakes and streams. Greatest elevation 1300 feet which does not vary much over 100 feet throughout the county. Traversed by the C. M. & St. P., C. M. St. P. & O., C. & N. W. and C. R. I. & P. railways. Within 24 hours of the great marketing and distributing centers of Chicago, Omaha, Minneapolis, St. Paul, Sioux City and Des Moines. Seventeen railroad stations within or on the immediate borders of the county. More than 80 per cent of the farms are within six miles of the markets.

County seat Blue Earth, population slightly less than 4000. Eleven towns have populations 300 to 2500.

**CLIMATE**—Typical of the mid-temperate zone. Climatic diseases unknown. Severe storms either winter or summer are rare. Winters are invigorating but not extremely cold. Summers hot with sufficient moisture to insure rapid maturity of crops. The long autumnal season is delightful. Rainfall abundant but not excessive. April, May, and June are the months of the heaviest rainfall. Average precipitation in county for the last 30 years about 28 inches. The numerous lakes form natural reservoirs for the surplus surface water, supplemented by natural waterways and a very extensive system of public ditches, principally tiled, with ample outlets through the Minnesota and Blue Earth rivers, which traverse adjoining counties.

**POPULATION**—About 25,000—Sixty per cent of the population is rural. European stock predominates, especially on farms, well Americanized. German, Swedish Norwegian, Danish, Polish and Irish extraction principally.

**INDUSTRIES**—Agriculture is and must remain the predominant basic industry and source of wealth. Crop failures are unknown. The first crop ever raised in the county was corn and it is firmly established as the principal field crop. It has been grown successively and successfully since 1855. Good farmers consider 60 bushels per acre an average yield. Over one hundred bushels have been raised on demonstration tracts and eighty bushels is a common yield. Faribault county corn has won many first premiums and awards and competes successfully with Illinois and Iowa.

**STOCK RAISING**—Faribault county is far famed for its thoroughbred livestock. There are more animals of high breeding on Faribault county farms than any other county in the state. The remarkable success which has attended the growth of the livestock business in this county is due to the greatest extent to the study and efforts of the breeders to produce the best animals.

Growing and fattening for the market is highly important. Most of Faribault county's bumper crops are fed on the farms where grown

and marketed on the hoof. The vast agricultural wealth rests on the combination of corn, hogs and cattle. Dairying is very profitable and there are numerous creameries. The poultry industry is highly developed and a source of large revenue. Through the efforts of the Farm Bureau and the County Agent, supplemented by the many farm clubs, the raising of pure bred cattle and hogs is rapidly increasing. Faribault county furnishes most of the high class breeding stock for the state of Minnesota.

**OATS**—Is the principal grain crop, profitable and highly necessary in proper rotation of crops. Most of the oats grown are fed locally. Cultivated grasses thrive and afford abundant pasturage and hay. Corn silage is an important feed crop in connection with the livestock industry and silos are found on all of the best farms.

Nowhere can a greater diversity of field products be grown with success. Canning factories in Wells, and Bricelyn offer profitable outlets for truck farming.

The value of agricultural land is high, but much lower than in older sections of the Mississippi valley possessing fewer advantages. The average per acre for farm lands for the last six decades are as follows: 1860—Mostly unsettled; 1870—Mostly homestead land; 1880—\$5.00 per acre; 1890—\$12.00 per acre; 1900—\$35.00 per acre; 1910 \$50.00 per acre; 1920—\$200.00 per acre.

**RELIGIOUS, EDUCATIONAL AND SOCIAL**—These essentials of a successful community have kept pace with the material development. Churches of every well recognized denomination are within reach of all parts of the county. Lutherans predominate, with large congregations of Methodists, Catholics, Presbyterians, Baptists and other denominations established in fine church homes in the various towns and villages, as well as in the rural communities.

There are several high schools in the county and one college at Winnebago. Public schools are within reach of every home and the standard is high. There are several consolidated schools in the county and more are coming. There are also several Catholic and Lutheran parochial schools.

**FRATERNAL ORGANIZATIONS** abound and farmer's clubs are an important factor in all progressive communities, numbering about twenty in the county. Several of the towns have well organized commercial clubs that co-operate and work with the farmer's clubs.

**ROADS**—The county is committed to a policy of good roads. There are 200 miles of state highways established of which about 100 miles are permanently improved. Motorists know when they reach Faribault county by the superiority of the highways over surrounding counties. Lines of the proposed Babcock paved highway system are laid out to cross the county both ways.

**SCENIC**—The number of wooded lakes and streams, abounding in all parts of the county, many of them with lofty banks and deep, clear water, make the out-of-doors a panorama of delight. Beautiful drives, integral parts of the highway system, circle and wind along the shore lines, banked with lofty trees "where summer sunshine sifts through entwining boughs" and, stretching off through verdant fields and pastures, dotted at frequent intervals with beautiful, prosperous homes, and leading into and through homey and hospitable villages, entrance the traveler and fill the resident with happy pride.

**THE CAMPER TOURIST AND PLEASURE SEEKER** find the region pleasantly alluring. The lakes abound with game fish and fowl. Wild life is abundant and varied. To all who appreciate nature at her best, Faribault county is indeed the "Garden and Beauty Spot of the World."

# SOUTHERN MINNESOTA FARMS FOR SALE

Winnebago Alex  
*Blue Earth Valley Farms a Specialty*

Eckel Minnesota  
*Correspondence Solicited*

IF YOUR ENGINE IS SICK WE ARE THE DOCTORS

## PENNEY & BOTTOMLEY GARAGE

Auto Repairing and Accessories

Nash, Ford and Buick Automobiles and Fordson Tractors

Winnebago,

Minnesota

### CORNLEE STOCK FARM

WILLIAM A. SHARPE, Prop.

Breeder of

REGISTERED POLAND CHINA HOGS

3½ Miles Northwest of Winnebago

Phone 3852

WINNEBAGO

MINNESOTA

### WOODBURN STOCK FARM

F. W. RITTER, Prop.

Breeder of SHORTHORN CATTLE

*Herd Headed by* PREMIER MARSHALL 451293

*Out of* PERFECTION MARSHALL

Our Herd is of the Avondale Strain

Phone 2119

7 Miles Northwest of Winnebago, Minnesota

### OTTO DEAL

Breeder of

BIG TYPE POLAND-CHINAS



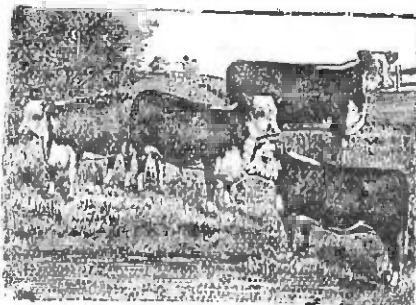
Herd Headers are OUTSTANDING INDIVIDUALS  
and CARRY THE CREAM OF BLOOD LINES  
and have Big Bone, Great Height and Length

*Breeding Stock for Sale at All Times*

Shropshire Sheep *and* Black Langshan Chickens

Farm four miles Northeast of Winnebago  
P. O. Winnebago

Phone No. 2415



# PINE HILL STOCK FARM

J. H. Mehl & Sons, Props.

## SCOTCH AND SCOTCH TOPPED SHORTHORNS

Overbrook Sovereign 449314      Royal Hampton 819494

POLAND CHINA HOGS      STOCK FOR SALE AT ALL TIMES

J. H. MEHL & SONS, Frost, Minn.

## Stock Breeders of Faribault County

It is to the credit to a large extent of the following named breeders who have ads in this book that Faribault county has forged so far ahead of other counties in the Pure Bred Stock game.

The following have ads in this plat book and livestock breeders guide.

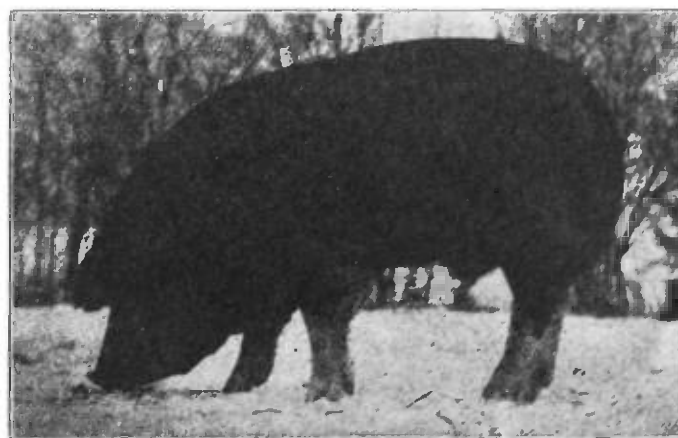
William A. Sharpe  
F. W. Ritter  
Otto Deal  
J. H. Mehl & Sons  
M. A. Leeman  
M. J. Schofield  
F. W. Hanning  
Glen C. Maine  
White Brothers  
Clement Gronfor  
Albert F. Weber  
Zupp & Weber

Monson Brothers  
G. A. Schneider & Sons  
Pitcher Stock Farm  
M. B. Cross & Sons  
Edw. More & Sons  
J. F. Sullivan & Sons  
B. P. Messer & Son  
F. C. Maiers  
R. G. Slater  
O. D. Ackerman  
James A. Watson  
L. U. Garlick

## M. A. LEEMAN

Breeder of

## BIG TYPE POLAND CHINAS



Herd headed by Chief Guardsman and Long Joe 1st

Chief Guardsman by the Guardsman is one of the best breeding boars in the Northwest. Come and look his pigs over and it will prove my statements. Long Joe 1st by Highland's Big Joe is also sireing the right kind. If you want a real boar, pig or gilt, come and look mine over.

M. A. LEEMAN

Winnebago - Minnesota

# Faribault County's Court House



**BLUE EARTH**—County seat of Faribault County. Population nearly 4,000. On the Blue Earth River. The city offers ideal living conditions. Thoroughly modern. The biggest little city in the west. Gives the impression of being a place of 10,000. Miles of paved streets and alleys. City owned water, light and heating facilities. Has three banks, all lines of retail business housed in modern stores, several churches, splendid high school and public schools. Excellent parochial schools. All fraternal organizations. Live commercial club. Two live weekly newspapers. Two

railroad systems. Large flour mill running at full capacity, monumental works, creamery and other industries; wants more. Parks and drives. County Fair Association grounds on outskirts of city.

**BRICELYN**—Population over 500. 23 miles Southwest of Albert Lea. Located on C. & N. W. and C. R. I. & P. railroads. Has canning factory, two banks, Time and Interest Computer Company, newspaper, and other thriving business concerns. Has fine schools. The main industry is farming, this town being the heart of a rich dairying and stockraising district.

**DEHAVAN**—Population 350. Thirty-three miles Northwest of Albert Lea. Located on the C. M. & St. P. railroad. Two excellent schools, two banks, two garages and several other thriving business concerns. The Delavan Farmers creamery is one of the most up-to-date creameries in the state. A good town in a good farming district.

**EASTON**—Population slightly less than 400. Twenty-five miles Northwest of Albert Lea. Located on the C. M. & St. P. railroad. Excellent schools. Mill which grinds more Buckwheat than any other mill in this part of the state. Two banks and several other thriving business concerns. A rich farming district.

**ELMORE**—Population 1100. Thirty-five miles Southwest of Albert Lea. Railroad center on the C. & N. W. and the C. St. P. M. & O. railroads. Tile factory, creamery, two banks and other live business concerns. Weekly newspaper. Excellent school facilities. Located in a general farming district devoted to the raising of corn and livestock.

**FROST**—Population 200. Thirty-five miles Southwest of Albert Lea. On the C. & N. W. railroad. Excellent schools, creamery, bank and many other thriving business concerns. Weekly newspaper. A thriving business town in a thriving district.

**GUCKEEN**—Population 100. Eight miles West of Blue Earth. On the C. & N. W. railroad. Fine school. One bank, garage, farmers elevator, implement house and several other thriving business concerns. Many breeders of thoroughbred livestock in this vicinity. A wealthy farming district.

**HUNTLEY**—Population 100. Located on boundary between Faribault and Martin Counties. On C. M. & St. P. railroad. One bank, elevator, garage, lumber yard, implement house, and several thriving business concerns. Has one of the finest consolidated schools in the county. In a rich farming district.

**KIESTER**—Population 300. Located twenty miles Southwest of Albert Lea. Has bank, garage, elevators, and many other thriving business concerns. Fine schools. In a territory devoted to general farming.

**MINNESOTA LAKE**—Population 500. Twenty-five miles Northwest of Albert Lea. Located on C. M. & St. P. railroad. Good schools, two banks, newspaper, garages, implement house, and many other thriving business concerns. Corn, livestock and grain are the main products of this locality.

**WALTERS**—Population 150. Seventeen miles West of Albert Lea. Located on the C. R. I. & P. railroad. One bank, garage, implement house, creamery and numerous other business concerns. Good school. A live town backed by a progressive farming district.

**WELLS**—Population 2400. Thirty-five miles Southwest of Albert Lea. Division point on the C. M. & St. P. railroad. Railroad repair shops, mill, creamery, canning factory, foundry, machine shop, talking machine factory, three banks, two newspapers and several other thriving business concerns. Has excellent schools. Located in the heart of a rich farming district.

**WINNEBAGO**—Population over 2000. Forty miles N. W. of Albert Lea. On the C. M. & St. P. and C. St. P. M. & O. railroads. Three banks, two newspapers, nursery, creamery, machine factory, flour mill and several other thriving business concerns. Parker College is located at this place. Excellent schools and excellent buildings. Bass Lake Sumner Resort is located close to the city. Center of a rich dairying, corn growing, and stock breeding community.



## Solid Facts about Faribault County

---

Faribault County has won more prizes on its thoroughbred livestock than any other county in the state.

Faribault County soil is over 70 per cent black loam with clay sub-soil.

Faribault Countys' soil is less than 1¼ per cent wet, marshy, or boggy.

Faribault County has twenty-five progressive Farm Bureau Clubs with a membership of nearly 2,000.

Faribault County has some of the finest lakes and streams in the state.

Faribault County leads in corn production.

Faribault County raised an average of forty-one bushels of corn an acre in 1919. The average yield for Illinois was thirty-seven bushels an acre and Iowa thirty-nine bushels.

Faribault County excels in purebred livestock as well as corn, hay and grain.

Faribault Countys' new canning factories at Bricelyn and Wells are second to none and furnish an excellent market for truck gardening.

Faribault County land surface is divided into 2,139 farms.

Faribault County is fast becoming a great fruit growing county, it has been found that as fine a quality of winter apples can be raised here as in any of the eastern states and that the apples have good keeping qualities.

**YOU can buy a good Faribault county farm for \$200.00 per acre. You can raise 90 bushels of \$1.50 corn on each acre of farm land.**

**WHY LOOK ELSEWHERE FOR A FARM?**

Just to remind you that

**M. W. DIETZ**

**PHOTOGRAPHER**

Winnebago, Minn.

makes the best

PHOTOGRAPHS :: PORTRAITS :: COPYING :: ENLARGING

KODAK FINISHING AND KODAK SUPPLIES

## BLUE EARTH VALLEY NATIONAL BANK

**YOUR BUSINESS  
IS APPRECIATED**

**5% paid on time certificates of deposit**

WINNEBAGO, MINN.

**J. A. CONINGS & SON**

**FURNITURE AND UNDERTAKING**

**We handle the best line of goods at fairest prices**

**BLUE EARTH, MINN.**

"OWN A FARM"

# B. E. BUGGY LAND COMPANY

REAL ESTATE :: LOANS :: CITY PROPERTY

BLUE EARTH, MINN.

Phone No. 205

## County Officials of Faribault County

Auditor ..... Jesse L. Herring  
Treasurer ..... Donald Stearns  
Register of Deeds ..... John Siverson  
Sheriff ..... John A. Bachtle  
County Attorney ..... Henry J. Frundt  
Judge of Probate ..... John W. Vance  
Surveyor ..... Calvin N. Krosch  
Coroner ..... Peter F. Holm  
Clerk of Court ..... Carney Koerner  
Court Commissioner ..... J. C. McLaughlin  
Sup't of Schools ..... Margaret F. Bierer

### COUNTY COMMISSIONERS

1st District ..... R. J. Havnen, Bricelyn  
2nd District ..... A. S. Perrizo, Blue Earth  
3rd District ..... August Miller, Wells  
4th District ..... Alexander Eckel, Winnebago  
5th District ..... John Migelis, Easton

## M. A. DEWANZ CITY TIN SHOP

Rudy Cast Furnace                      Lennox Steel Furnace  
Sheet Metal Workers                  Repairing a Specialty  
BLUE EARTH, MINN.

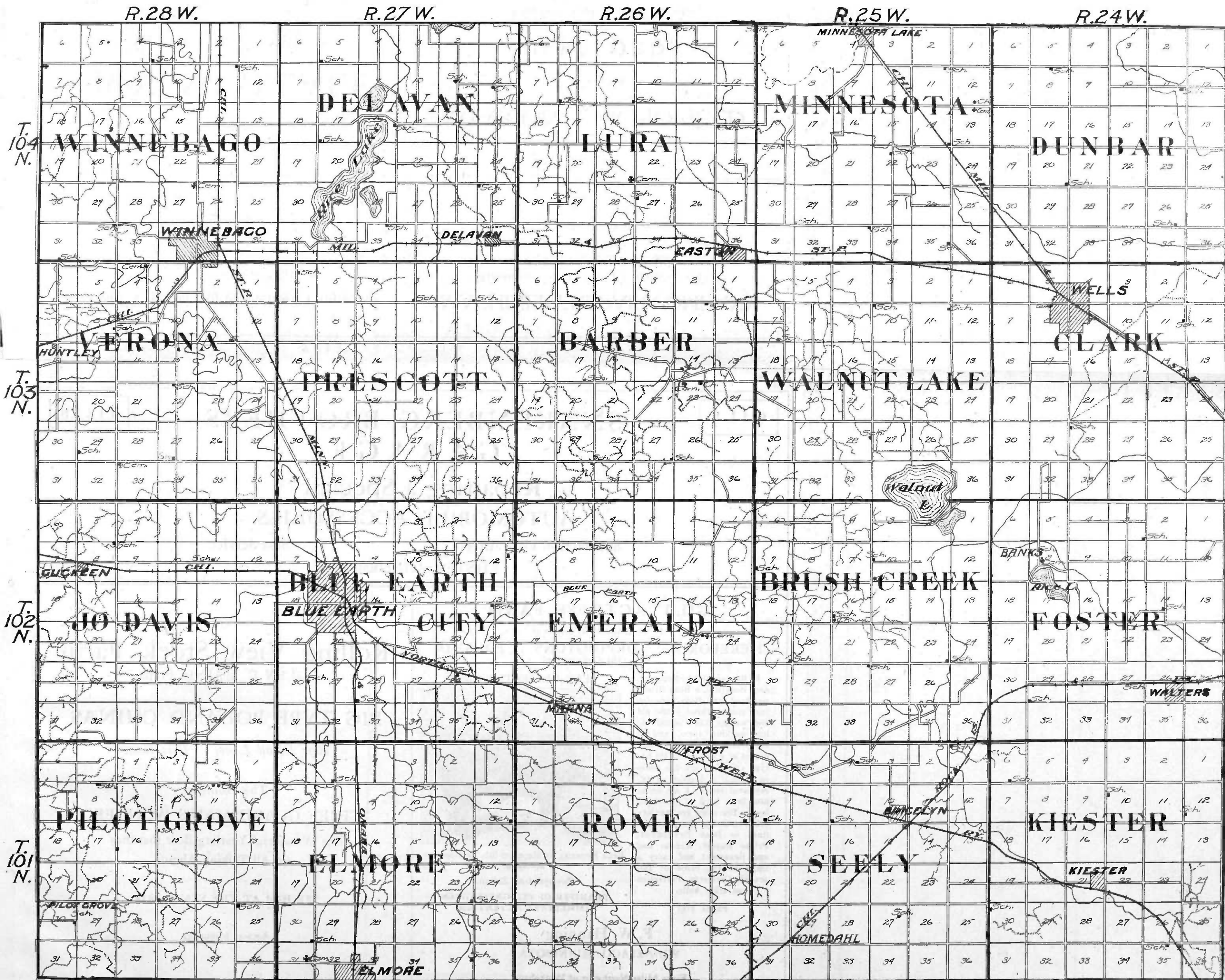
When you think of pictures, think of  
**ROBERTSON of Blue Earth**

Mail your films to him

Learn to shop at  
**CLEVENGER'S  
VARIETY STORE**

BLUE EARTH, MINN.

# FARIBAULT COUNTY MINN.



## Wells Vulcanizing & Battery Company Willard Service Station

Will trade you what you want for what you don't want

NEW AND USED TIRES

GATES HALF SOLES

Phone us your Tire and Battery Troubles...

We do the rest

WELLS, MINN.

Phone 132

## MACHINERY REPAIR COMPANY

Manufacturers of Steel Wagon and Storage Tanks

We make a Specialty of Rebuilding

STATIONARY, PORTABLE, STEAM AND GAS TRACTION ENGINES

WELDING

Wells - Minn.

Sooner or later you will trade with

# BOB WALLACE

## Mercantile Company

### Winnebago, Granada or Fairmont

FOR

## GROCERIES, DRY GOODS and READY-TO-WEAR

### Why Not Sooner?

# MARION J. SCHOFIELD

BREEDER OF

## HEREFORDS

of the Best Blood Lines and Ancestry

Our herd is Desirable, Dependable, Profitable  
Breeding Stock of Recognized Blood Lines

### BREEDING STOCK OF BOTH SEXES FOR SALE

### INSPECTION INVITED

2 miles North and 5 miles West of Winnebago.

WINNEBAGO, MINN.

OILS

# STAKENBERG BROTHERS GARAGE

TIRES

## Repairing a Specialty AUTOMOBILE ACCESSORIES

Satisfaction Guaranteed

Best Service

KIESTER, MINNESOTA

### GILT ACTRESS FARM

F. W. HANNING, Breeder of

HEREFORDS

ORPINGTONS

POLANDS

(The Kind that Lay)

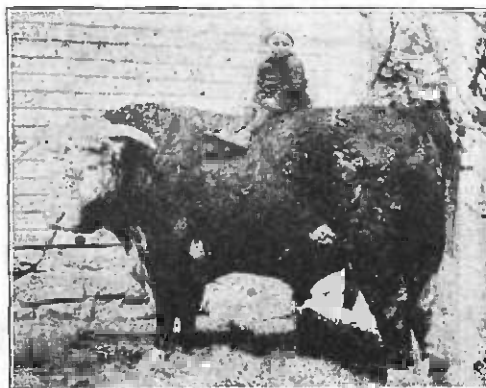
BEAU REAPEATER 616638

By Repeater 9th by Repeater, dam Beautiful, a Beau Brummel bred cow. Beau Repeater just turned three years old and weighs 2,060 pounds in his working form, and is everything that you would expect of a Repeater. He has type and scale and has proven himself a breeder of exceptional merit. I am using him in a herd of about 60 head. The cows are Anxiety 4th extraction through such lines as Beau President, Prince Rupert, Kansas Lad and Beaumont and carry a tinge of the blood of Improver, Corrector, Perfection and other bulls.

Phone 4161

F. W. Hanning  
WINNEBAGO, MINNESOTA

Eight Miles Northwest of Winnebago



Beau Repeater by Repeater 9th, by Repeater

*Correspondence Solicited*

TRANSFER OF PEDIGREES GIVEN  
IMMEDIATE ATTENTION

### Rolling View Stock Farm

GLEN C. MAINE, Prop.

### BIG TYPE POLAND CHINAS

*Best Blood Lines Best Bone*

The Home of

“CHIEF GUARDSMAN’S WONDER”

The Wonderful Yearling Boar that they  
are All Talking About

SEE HIM AT THE STATE FAIR

Amboy, Minnesota



# T.101 N. KIESTER R.24 W.

<div>J. Halverson 165.60</div> <div>6</div> <div>H. Halverson 243.04</div> <div>A.C. Buswell 81.47</div> <div>School</div>	<div>L.S. Johnson 162.40</div> <div>5</div> <div>G.A. Steckelberg 160</div> <div>A.Hundale &amp; I.L.Himlie 160</div>	<div>C.Meyer 162.31</div> <div>4</div> <div>R.A.Lutz 161.57</div> <div>N.C.Conrad 160</div>	<div>S.A. Huston 240.21</div> <div>3</div> <div>H.W. Bunnberg 160.16</div> <div>C.P. Clausen 160</div>	<div>W.L. Katzung 159.92</div> <div>2</div> <div>J.M. Heier 161.57</div> <div>J. Obermeier 240</div>	<div>J.M. Logan 161.63</div> <div>1</div> <div>G.Skuff 240</div>	<div>W.F. Pfennig 160.35</div>
<div>B.H. Guldness &amp; A.J. John 164.35</div> <div>7</div> <div>J.C. Johnson 167.13</div>	<div>A.C. Buswell 160</div> <div>8</div> <div>G.W. Baumann 80</div> <div>O.L.Olson 80</div>	<div>W.F. Baumann 80</div> <div>A.F.Meyer 240</div> <div>G.W. Baumann 80</div> <div>M.Hummer 80</div>	<div>W.D. Conrad 160</div> <div>9</div> <div>L. Heitzig 160</div> <div>J.E. Heitzig 80</div> <div>O.H. Swenson 80</div>	<div>A.L. Katzung 240</div> <div>10</div> <div>H.R. Conrads 80</div> <div>R.Lutz 80</div>	<div>F.H. Yost 160</div> <div>11</div> <div>C.H. Scherb 80</div> <div>F.W. Scherb 80</div> <div>F. Brier 80</div> <div>A. Honey 80</div>	<div>G. Anderson 80</div> <div>R.T. Davis 160</div> <div>H. Aibers 100</div> <div>L.C. Hintz 160</div> <div>F. Koch &amp; J. Fisher 160</div>
<div>F. Foster 161.59</div> <div>18</div> <div>J.O. Lund 160.79</div>	<div>H. Thompson 80</div> <div>S.K. Thompson 80</div> <div>17</div> <div>A. Greenfield 158.35</div>	<div>L. Heitzig 160</div> <div>H.C. Meyer 80</div> <div>E. Meyer 80</div>	<div>R. Lutz 200</div> <div>16</div> <div>S.A. Fulton 200</div> <div>M.H. Baker 80</div>	<div>M. Rye 80</div> <div>15</div> <div>C. Obermeyer 40</div> <div>J.L. Schieb 80</div> <div>J. Conrad 80</div>	<div>G.B. Scherb 240</div> <div>14</div> <div>E. Hintz 160</div>	<div>E.B. Stillman &amp; A. Presbait 160</div> <div>13</div> <div>J.G. Passer 160</div> <div>P.O. Peterson etal 160</div>
<div>R.J. Eastvold 160.65</div> <div>19</div> <div>J.O. Lund &amp; L.B. Lund 169.23</div>	<div>E.E. Ozmun 80</div> <div>20</div> <div>L.A. Brackke 160</div>	<div>R.R. Parks 151.53</div> <div>T. Baettcher 119</div> <div>J.N. Hanson 80</div> <div>K. Larson 80</div>	<div>E.S. Lair 167.46</div> <div>21</div> <div>L.E. Ringer 80</div> <div>O. Schmidt 153.36</div> <div>Schneiber 121.06</div>	<div>A.J.A.J. Meyer 151.13</div> <div>22</div> <div>H.P. Peterson 155.99</div> <div>C. Ribberlein 156.56</div>	<div>T. Larson 80</div> <div>J. Berse 80</div> <div>S. Larson 160</div> <div>23</div> <div>J.L. Withmann 290</div>	<div>N.E. Anderson 160</div> <div>O.J. Ant Seberg 160</div>
<div>C. Johnson 280</div> <div>Sch. E. Hork 44.69</div> <div>30</div> <div>I. J. Hork 79.13</div>	<div>S.E. A.S.S. Huso 320</div> <div>29</div> <div>H. H. Sealey 160</div>	<div>M. Tufta 160</div> <div>28</div> <div>M.J. Herrick 160</div> <div>A.M. Matson 200</div>	<div>R.D. Ellis 60</div> <div>27</div> <div>C. Eklund 200</div>	<div>H. McGreg 159.35</div> <div>26</div> <div>M. Peterson 160</div> <div>M. Hekelson 157.98</div>	<div>J. Wolf 80</div> <div>25</div> <div>P. Tufta 160</div> <div>C. Johnson 160</div>	
<div>J.I. Hork 84.01</div> <div>31</div> <div>T.A.R. E. kertsan 245.17</div>	<div>J.N. Johnson 160</div> <div>32</div> <div>O. Petars 160</div>	<div>J.L. Seal 240</div> <div>B.P. Welland 160</div> <div>R.G. Ruggles 40</div> <div>M. Christensen 80</div>	<div>J.N. Dahl 160</div> <div>33</div> <div>T. Semrud 160</div> <div>J. Twedt 160</div>	<div>C. Amundson 160</div> <div>34</div> <div>G.B.I. Pouang 160</div> <div>O.G. Vold 160</div>	<div>G. Hocker 160</div> <div>35</div> <div>A. Bergdal 160</div>	<div>A. Anderson 200</div> <div>36</div> <div>A. Johnson 278.27</div>

## State Bank of Walters

Walters, Minnesota

CAPITAL & SURPLUS \$20,000.00

Progressive, Carefully Managed and has the Welfare of its  
Customers Always at Heart

*Banking With Us is Satisfaction Plus*

### OFFICERS AND DIRECTORS

Ralph O. Olson, President

J. G. Courier, Vice-Pres.

C. N. Anderson, Cashier

Oda Steinhau, Asst. Cash.

Fred Schacko, Director

Geo. F. Meyer, Director

## Deaver & Steiner Music Company

"WHERE MUSIC IS THE SWEETEST"

The Largest and Only  
**EXCLUSIVE MUSIC STORE**  
in Faribault County

Blue Earth

::

Minnesota

## SIEMONSEN & NEVE

Dealers in

Hickory Hardware, Harness, Farm Implements  
and Specialties

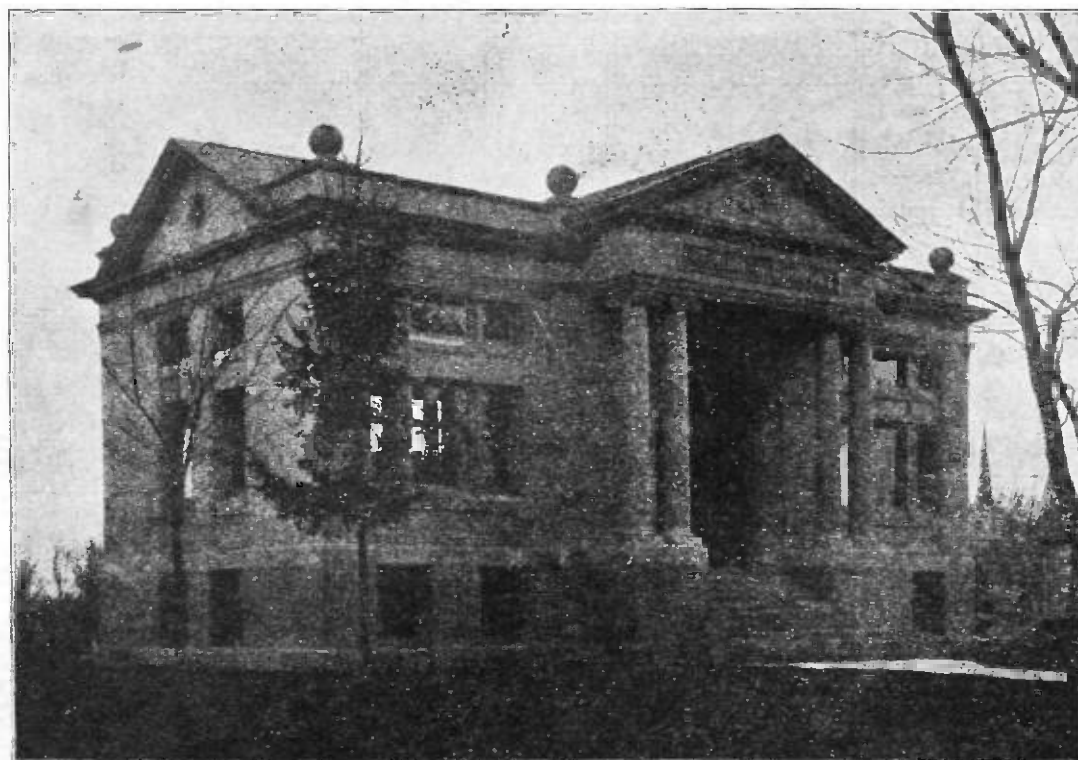
BEST GOODS FAIREST PRICES BEST SERVICE

Walters,

Minnesota

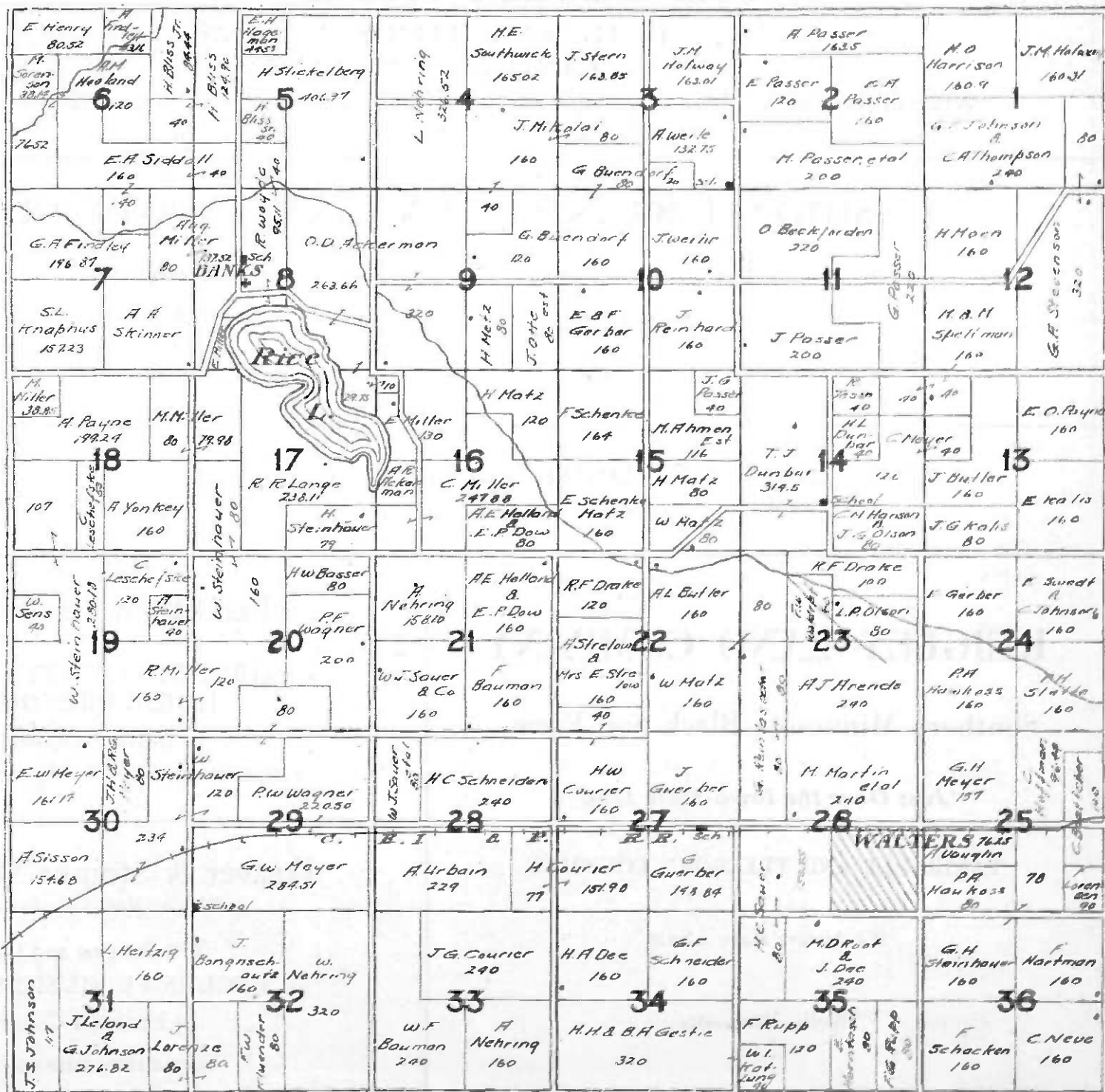
## CARNEGIE LIBRARY

Located at  
Blue Earth  
in  
Faribault  
County



THIS  
LIBRARY  
Places The  
**KNOWLEDGE**  
of  
CENTURIES IN THE  
REACH OF ALL

**T.102 N. FOSTER R.24 W.**



J. H. SEEDORF & SON

*FARM IMPLEMENTS*

When in Need of Anything in the Implement Line, See Us

Wells, Minnesota

Repairs Always on Hand

Phone No. 257

SIDDALL-BRANDT COMPANY, HARDWARE

De Laval Separators and Barn Equipment

PAINTS :: :: OILS

Wells, Minnesota

Phone 70

GET TO KNOW

GILDNER BROTHERS & HOLLEY

Clothing and Shoes

::

Home of Hart Schaffner & Marx Clothes

Wells, Minnesota

KEIGLEY LAND COMPANY

Southern Minnesota Black Soil Farms

*"Just Over the Iowa State Line"*

FARIBAULT AND FREEBORN COUNTIES

"We Always Have a Snap"

Wells, Minnesota

Percheron Horse Farm

WHITE BROTHERS, Proprietors

FARIBAULT COUNTY'S LEADING  
HORSE BREEDERS

Delavan, Minnesota

1 MILE NORTHEAST OF DELAVAN    PHONE 6-2

Deaver & Steiner Music Co.

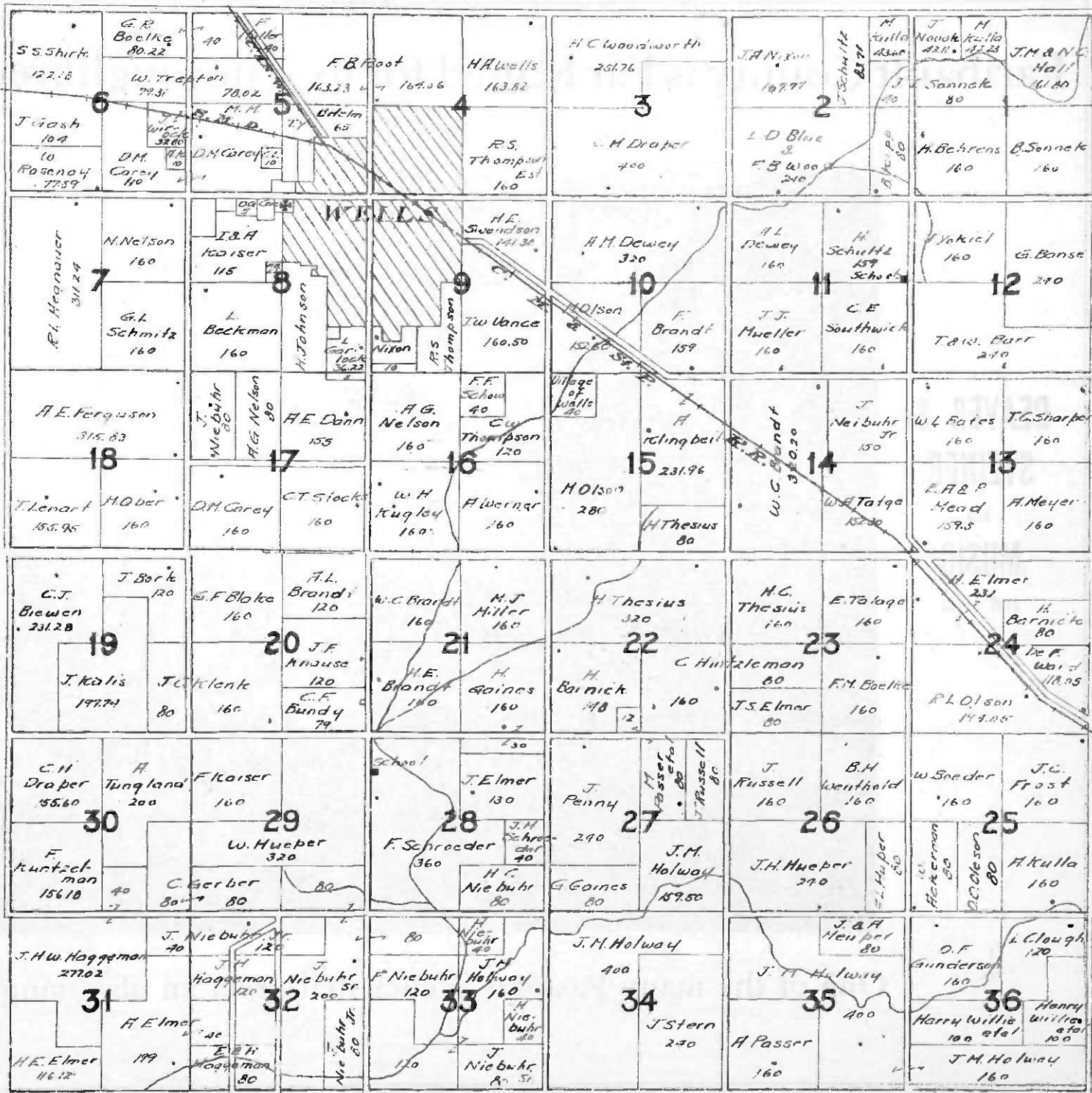
*"Where Music is the Sweetest"*

The Largest and Only

EXCLUSIVE MUSIC STORE

In Faribault County

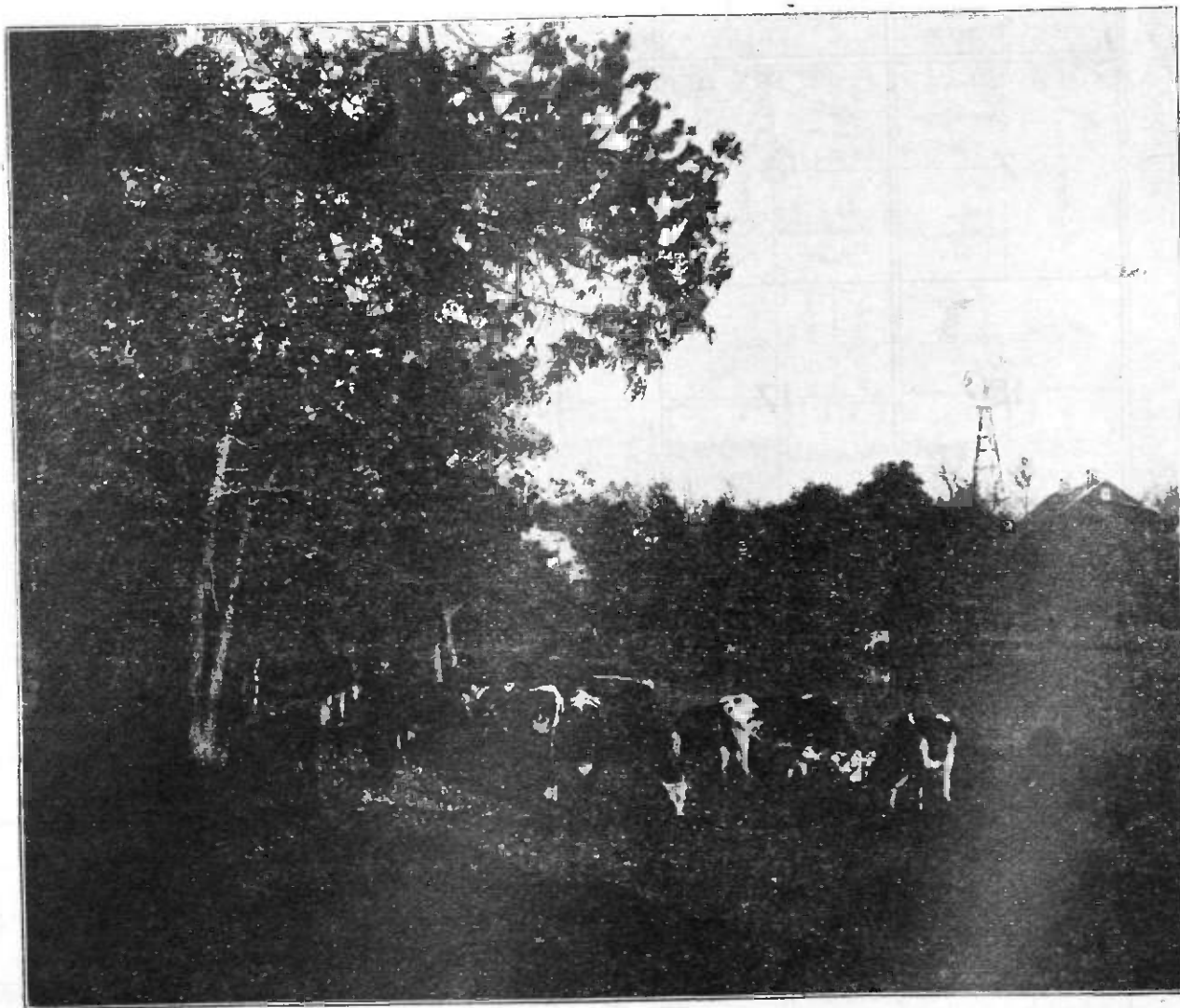
BLUE EARTH, MINNESOTA





# Faribault County is Far Famed for its Thoroughbred Livestock

**DEAVER &  
STEINER**  
FOR  
**MUSIC**  
BLUE EARTH



**DEAVER &  
STEINER**  
FOR  
**MUSIC**  
BLUE EARTH

One of the many Pastoral Scenes that greet an observing eye

# T.104 N. DUNBAR R.24 W.

F.W. Schroeder 152.95 6	W.E. Schroeder 161.41	W. Schroeder 161.42 5	J.A. Miller 81.13 40 Miller 40 4	F. Miller 321.72	D.E. Thomas 161.43 3	F. Miller 161.45 2	G.E. McQuatton & H.A. Deuel 160 242.48	P. Wagshall 165.78	F.E. Lowrey 166.97
A. Newson 149.37	E. Bruegger 160	F.A. Miller 80 I. Huether 160	J.A. Miller 200 W. Gonskow 120	H. Black 200	F. Lowry 80 40	P. Schulte 80	H.A. Grunzke 160 40	S. Bushlock 160	
W. Wendt 144.33 7	E.E. Schroeder 160	F. Schroeder 160 E. Bruegger 80 8	O. Wendt 160 F.A.S. Horell 160 9	E.A. Miller 160 H.A. Schroeder 160 10	L. Schmitt 158 40 11	N.E. Lowry 160 40 12	H.T. McEwen 160		
G. Dylla 305.23	J.M. Burmaster 200	W. Rothke 160 W. H. H. Berg 80 W. Dunlap 80 9	L. Schnoor 240 10	W.C. Schultz 160 11	CH. Culbertson 160 12	J. Dylla 200 13	Francis Tellett 160 14	E. Tellett 160 15	
W.F. Darnfeldt 74.78 H. Boelke 20 18	P.A. Wendt 160 17	J.H. Burmaster 160 J.A. Miller 160 16	G.W. Madden 80 W. Wickworth 120 W. Wickworth 80 16	H. Schnoor 260 40 15	U. Stenzel 80 I. Arapha 80 14	J.E. Mikolai 240 F. Tellett 160 13			
R.H. He 104.23 Schimmer 74.45 19	W. Kaiser 50 B. Tenke 80 20	W. Kaiser 320 21	G. Banister 120 22	A. Nelson 160 R. Kruger 160 23	G.S. Enghee 160 24	Trask 80 25			
W.L. Behn 74.61 80 19	J.F. Miller 80 20	W.F. Gonskow 160 21	W. Kruger 160 H.F. Gonskow 160 22	L. Roltenhaugen 160 C. Stephen 160 23	H. Winkler 160 Chirpisch 120 J. Vokel 40 24	Jas. Yokel 120 Stallock 160 25			
F. Brander 152.07 E.H. Miller 160 20	W.F. Schenke 180 21	E. Biebler, et al 159 school 22	H. Roltenhaugen 160 23	L. Roltenhaugen 160 24	T. Harris 160 J. Yokel 160 25	J. Rasmussen 160 26			
A. Schultz Jr 153.29 30	A. Grunzke 160 31	A. Kruger 160 H.T. Neubauer 160 29	M.J. Neubauer 140 120 28	W. Roltenhaugen 160 Andersson Nelson 320 29	F. Roltenhaugen 295.5 30	J.H. Nixon 320 31	I.F. Mikolai 120 J. Rasmussen 160 32		
J. Stallock 146.29 31	H.A. Kulla et al 160 32	F. Gierpich 160 H. Boelke 160 33	W. Roltenhaugen 160 34	F. Roltenhaugen 160 35	H. Nikon 320 36	F. Schultz 320 37			
F. Miller 151.26 W.H. Billington 154.35 31	H.F. Schenke 155 W. Rep. 33 G.R. Boelke 38.96 32	F. Hokensee 160 I.H. Root 160 33	L.H. Dang 160 P. Yankes 90 H.B. Williams 80 34	L. Stallock 160 4.C. Woodworth 160 35	H. Nikon 320 J. Schultz 160 36	F. Schultz 320 37			
W.H. Billington 154.35 G.A. Smith 80 31	E. Hokensee 197.30 32	P.H. Williams 120 33	L.H. Caldwell 160 H.A. Wells 160 34	J. Stallock 160 4.C. Woodworth 160 35	J. Schultz 160 36	H. Nikon 320 J. Schultz 160 37			

# FIRST NATIONAL BANK of Bricelyn

A Home Bank owned and controlled by Home People

Call on us and we will help you  
solve your financial problems.

We do a general banking business

Interest paid on Time Deposits

BRICELYN,

MINN

# State Bank of Bricelyn

SAFETY FIRST, LAST AND ALWAYS

A GOOD BANK IN A GOOD TOWN

WE WANT YOUR BUSINESS

Bricelyn,

Minn.

## Bursting Cribs of Faribault County Corn

Seventy  
to  
Ninety  
bushels  
not an  
uncommon  
yield



**DEAVER &  
STEINER  
MUSIC HOUSE**  
BLUE EARTH, MINN.

A Common Sight on All Farms

# T.101 N. SEELY R.25 W.

<p>CT Helmseth 166.75</p> <p>AC Nelson 152.04</p> <p>NE Mordale 160</p> <p>W. Hansen 172.55</p> <p>OH 120</p> <p>NA 120</p> <p>MA 159.11</p> <p>6</p>	<p>OE 153.28</p> <p>School</p> <p>4</p>	<p>EY Hunt 160.95</p> <p>E.C. Chasie 164.15</p> <p>E Reed 160.70</p> <p>E R Reed 163.40</p> <p>2</p>	<p>Johnsor. 162.22</p> <p>E Stephen 197.45</p> <p>1</p>
<p>L.T. Thompson 202.45</p> <p>G. Henjum 81.72</p> <p>7</p>	<p>Larson 160</p> <p>5</p>	<p>OP 160</p> <p>E Foster 160</p> <p>3</p>	<p>I Lekness 140</p> <p>W. Russell 150</p> <p>1</p>
<p>J.H. Johnson 155.93</p> <p>TD Peterson 116.92</p> <p>7</p>	<p>RO 160</p> <p>8</p>	<p>RC Johnson 158.90</p> <p>OL Olson 160</p> <p>9</p>	<p>E.R. Riker 160</p> <p>10</p>
<p>AA Erdahl 120.25</p> <p>TE 160</p> <p>7</p>	<p>N Nordness 80</p> <p>H. Halgeson 80</p> <p>8</p>	<p>TD 153.30</p> <p>153.80</p> <p>9</p>	<p>E Riker 160</p> <p>10</p>
<p>S. Sjothen 159.58</p> <p>AT Mundafo 160</p> <p>18</p>	<p>T. Shaw 120</p> <p>E. Larson 80</p> <p>17</p>	<p>J.R. Deaich 160</p> <p>16</p>	<p>11</p>
<p>F.H. Thompson 80.01</p> <p>M. Sander 80</p> <p>18</p>	<p>O.T. Sillrum 80</p> <p>17</p>	<p>16</p>	<p>11</p>
<p>H. Gestin 200.54</p> <p>19</p>	<p>20</p>	<p>21</p>	<p>14</p>
<p>20</p>	<p>21</p>	<p>22</p>	<p>23</p>
<p>24</p>	<p>25</p>	<p>26</p>	<p>27</p>
<p>28</p>	<p>29</p>	<p>30</p>	<p>31</p>
<p>32</p>	<p>33</p>	<p>34</p>	<p>35</p>
<p>36</p>	<p>37</p>	<p>38</p>	<p>39</p>

# Studebaker

## SERIES 20 SPECIAL-SIX

A flexible disc coupling between the fly wheel and transmission of the SPECIAL-SIX absorbs motor shocks, prevents loss of power, reduces wear, and better insures the silent, smooth transmission of energy. That's one reason why the performance of the SPECIAL-SIX is out of the ordinary.

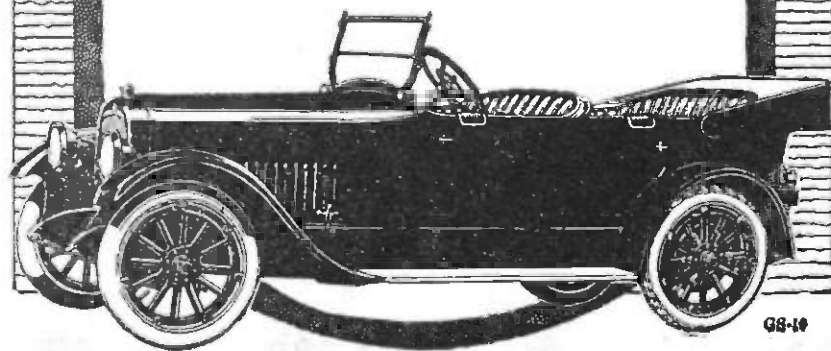
*Ask us what gasoline and tire mileage  
SPECIAL-SIX owners are getting.*

50-H. P. detachable-head motor; 119-inch wheel-base, giving maximum comfort for five passengers. All Studebaker Cars are equipped with Cord Tires—another Studebaker precedent.

**"This is a Studebaker Year"**

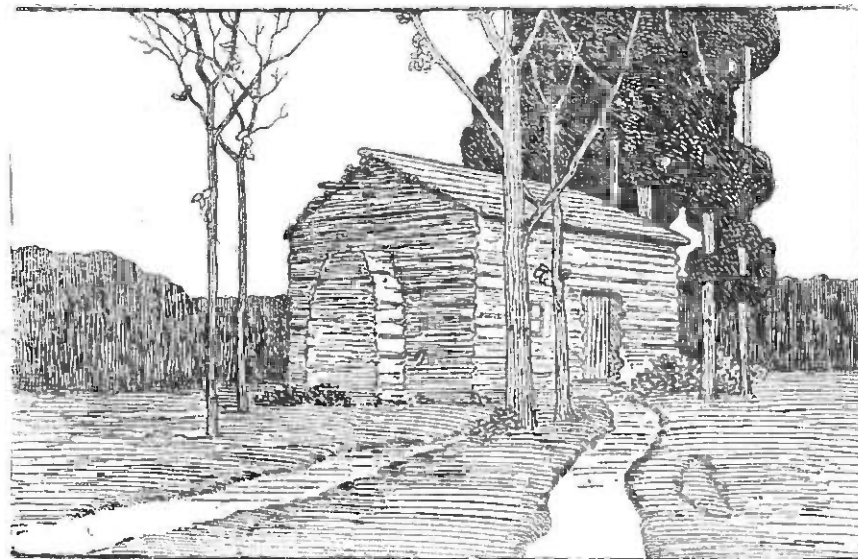
CHENEY MOTOR CO.

Distributors for  
Faribault, County



CHENEY MOTOR COMPANY  
Faribault, Minnesota

## A PIONEERS HOME



IN SUCH HOMES AS THIS  
Many of the Old Settlers of Faribault  
County first saw the Light of Day.

## Deaver & Steiner Music Co.

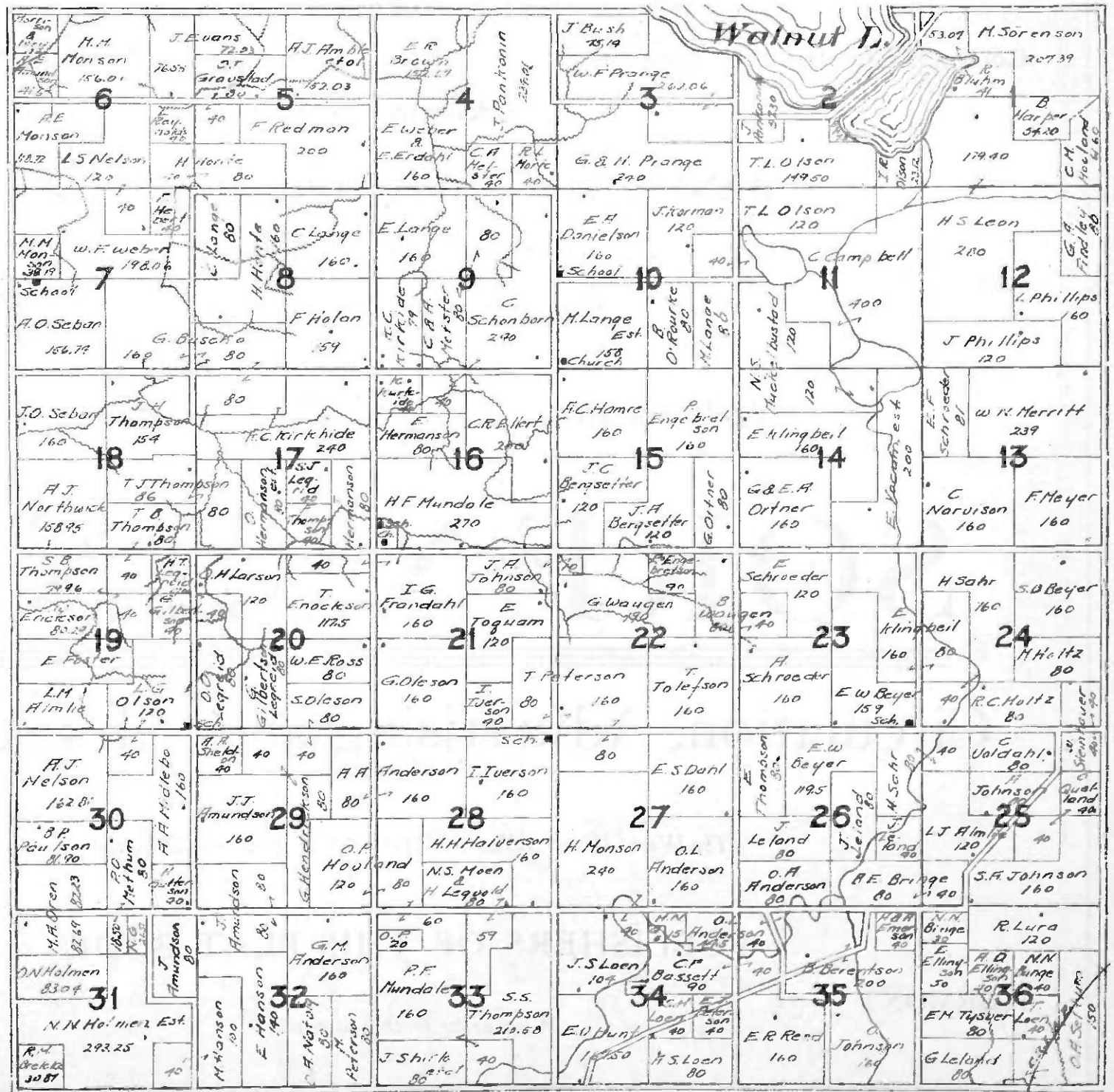
"WHERE MUSIC IS THE SWEETEST"

The Largest and Only  
EXCLUSIVE MUSIC HOUSE  
in Faribault County

Blue Earth :: Minnesota



# T.102 N. BRUSH CREEK R.25 W.



Conducts Circulation Campaigns

Conducts Sales Campaigns

Conducts Advertising Campaigns

MANY YEARS OF SUCCESSFUL SALES

Promotes Sales on New Patents

Builders of Catalogs, etc.

*The Public Reads Advertising Matter Prepared by*

# SORENSEN'S

## Circulation, Advertising and Sales Agency

*The World Wants What You Have to Sell. Why not Advertise?*

PUBLISHERS OF THIS PLAT BOOK

FAIRMONT

*Write us for further particulars*

MINNESOTA

This is a detailed historical map of Walnut Lake, Wisconsin, showing land ownership in 1906. The map is divided into numbered sections (1-36) and contains numerous names of landowners, acreage values, and geographical features like 'Walnut L.' and 'Walnut Creek'. The map is oriented with North at the top.

**Section 1:** J. Gosch 153.86, H. Thede 320

**Section 2:** S. Leary 158.45, P. Staloch 232.46, C. Gaise 80, C. Boeck 80, J. W. Cook 80, A. Barton 80, E. M. Graham 80

**Section 3:** A. O. Dren 70.18, O. Penny 80, A. Keys 160, L. N. Olds 50

**Section 4:** J. E. Landson 1733, H. C. Wold 30.73, C. Hanson 160, J. G. Gaise 160, C. Gaise 160

**Section 5:** C. Klenke 159.40, J. Linder 79.57, F. E. Klenke 160, F. H. Rath 240, M. Whit 160

**Section 6:** J. Klenke 79.97, A. Lutz 79.03, H. Shewer 79.03, E. W. Lutz 79.03

**Section 7:** J. B. Reuwer 158.52, H. Hassing 158.52, J. Schraeder 79.97, T. Schraeder 80, H. Horn 79.16, C. Steuwer 80.25, A. Hafner 240

**Section 8:** J. A. Tenny 80, C. Tenny 60, J. Zingler 80, J. Linder 120, W. Klenke 200

**Section 9:** J. Linder 120, W. Klenke 200, G. F. Zimmer 160, J. Klenke 160

**Section 10:** E. P. Cook 80, E. P. Cook 80, J. A. Leary 160, J. W. Dulas 160, J. Dulas 160

**Section 11:** J. A. Leary 160, J. W. Dulas 160, J. Dulas 160, J. Dulas 160

**Section 12:** H. Lindahl 160, J. A. Lindahl 80, E. A. Lindahl 80

**Section 13:** W. B. Mowery 320, J. N. Olds 160, E. Harper 160

**Section 14:** J. Dulas 160, J. Dulas 160, J. Dulas 160, J. Dulas 160

**Section 15:** E. Gray 220, J. Boeck 80, J. Dulas 160, J. Dulas 160

**Section 16:** J. T. Ziemer 320, J. Dulas 160, J. Dulas 160, J. Dulas 160

**Section 17:** J. A. Leary 160, J. A. Leary 160, J. A. Leary 160, J. A. Leary 160

**Section 18:** J. A. Leary 160, J. A. Leary 160, J. A. Leary 160, J. A. Leary 160

**Section 19:** R. L. Hadlick 1757, C. Hassing 80.2, T. F. Cusick 100, T. F. Cusick 100, T. F. Cusick 100

**Section 20:** M. Leary 160, W. Sipple 80, T. H. Hall 80, T. H. Hall 80, T. H. Hall 80

**Section 21:** C. Klenke 240, J. A. Leary 160, J. A. Leary 160, J. A. Leary 160

**Section 22:** J. H. Forsythe 160, J. H. Forsythe 160, J. H. Forsythe 160, J. H. Forsythe 160

**Section 23:** J. H. Forsythe 160, J. H. Forsythe 160, J. H. Forsythe 160, J. H. Forsythe 160

**Section 24:** T. E. Morkey 320, C. H. Draper 240, C. H. Draper 240, C. H. Draper 240

**Section 25:** C. H. Draper 240, C. H. Draper 240, C. H. Draper 240, C. H. Draper 240

**Section 26:** J. H. Forsythe 160, J. H. Forsythe 160, J. H. Forsythe 160, J. H. Forsythe 160

**Section 27:** J. H. Forsythe 160, J. H. Forsythe 160, J. H. Forsythe 160, J. H. Forsythe 160

**Section 28:** J. H. Forsythe 160, J. H. Forsythe 160, J. H. Forsythe 160, J. H. Forsythe 160

**Section 29:** T. Mullen 200, F. B. Loomis 160, B. J. Warnke 160, B. J. Warnke 160

**Section 30:** T. F. Cusick 188.25, T. F. Cusick 188.25, T. F. Cusick 188.25, T. F. Cusick 188.25

**Section 31:** J. Doyle 80, J. Doyle 80, J. Doyle 80, J. Doyle 80

**Section 32:** J. Doyle 80, J. Doyle 80, J. Doyle 80, J. Doyle 80

**Section 33:** J. Doyle 80, J. Doyle 80, J. Doyle 80, J. Doyle 80

**Section 34:** J. Doyle 80, J. Doyle 80, J. Doyle 80, J. Doyle 80

**Section 35:** J. Doyle 80, J. Doyle 80, J. Doyle 80, J. Doyle 80

**Section 36:** J. Doyle 80, J. Doyle 80, J. Doyle 80, J. Doyle 80

## G. A. BESKE

DEALER IN

General Hardware and Farm Machinery  
Oakland and Reo Automobiles

MINNESOTA LAKE, MINN.

## FIRST NATIONAL BANK

of Minnesota Lake

THE BANK THAT BACKS THE FARMERS

MINNESOTA LAKE, MINN.

## PUTZ BROTHERS GARAGE

Paige Motor Cars

Twin City and Avery Machinery

Repair Work a Specialty

MINNESOTA LAKE,

MINNESOTA

## Deaver & Steiner Music Company

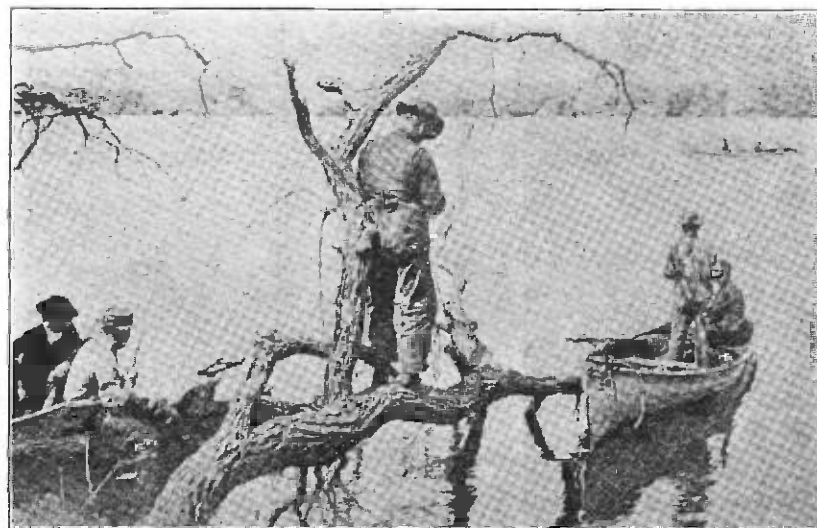
"Where Music is the Sweetest"

The Largest and Only

EXCLUSIVE MUSIC STORE IN FARIBAULT COUNTY

BLUE EARTH, MINN.

## Fine Fishing



## Farmers National Bank

of Minnesota Lake, Minn.

"We do for you anything a good bank ought to do"

REAL ESTATE

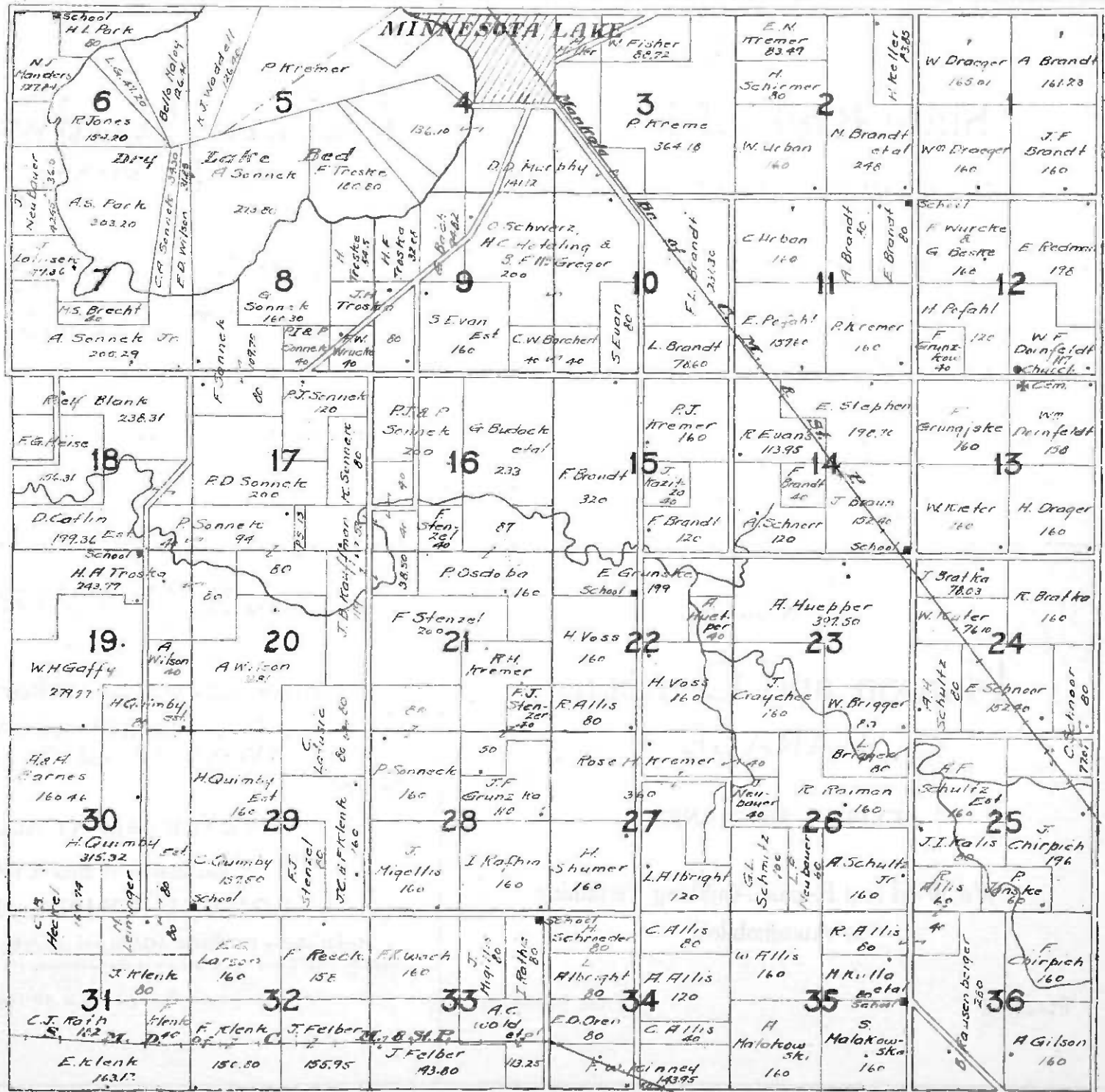
INSURANCE

FARM LOANS

Minnesota Lake, Minn.

Faribault County has many beautiful lakes

# T.104 N. MINNESOTA . R.25 W.





# State Bank of Frost

GENERAL BANKING

Insurance *and* Loans

WE APPRECIATE YOUR BUSINESS

Frost,

Minnesota

STOP AT

## Hanson and Company GARAGE

EXPERT MECHANICS

"We Weld and Repair Anything Pertaining  
to Automobiles"

Phone 32

Frost, Minnesota

# Gullord Hardware Co.

FROST, MINNESOTA

The Best Place to Buy Factory  
Brand Goods

Best Goods    Fairest Prices    Best Service

## CLEMENT GRONFOR

BREEDER OF

Scotch Strain Shorthorn Cattle

Head of Herd VILLAGE AVONDALE. Sired by  
COUNT AVONDALE and Out of Dam-MERRY  
SECRET.

STOCK FOR SALE AT ALL TIMES

Also Breeder of BIG TYPE

POLAND CHINA HOGS

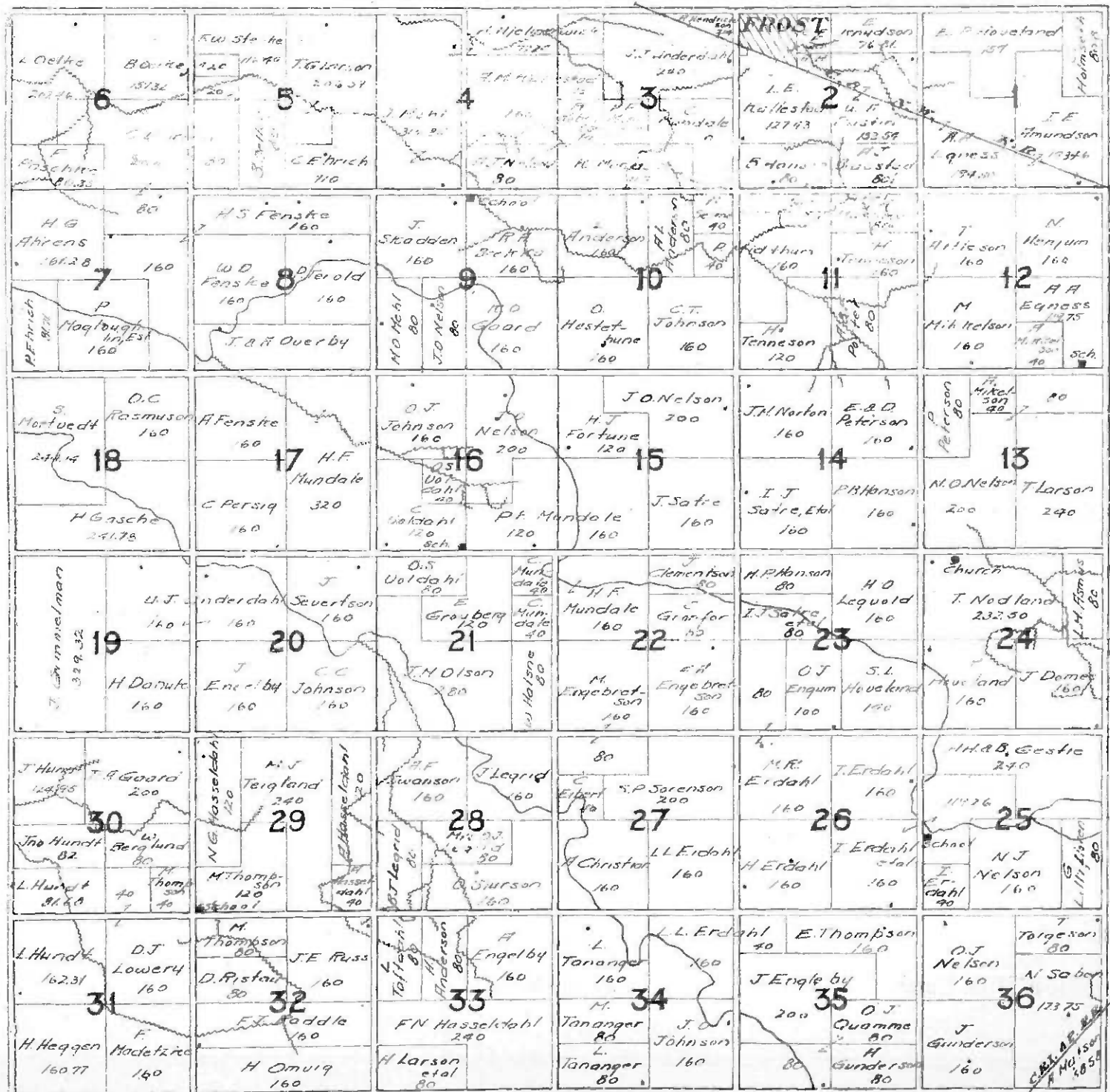
Herd Headed by BIG PRIZE AGAIN who is Half Brother of World's Champion  
BLACK PRIZE and also Grandson of the Clansman.

*Young Boars for Sale at All Times*

Frost

Minnesota

# T. 101 N. ROME R. 26 W.



## SHADY LAWN STOCK FARM

ALBERT F. WEBER, Prop.

Breeder of

REGISTERED SHORT HORN CATTLE  
AND  
BIG TYPE POLAND CHINA SWINE

Always have for sale a few good Bulls of serviceable age, right in pedigree, individual and quality, and can suit you in prices. Particulars on application. Farm 9½ miles east of Blue Earth, Minn.

## OZA TONKA STOCK FARM

ZUPP & WEBER, Props.

Breeders of

REGISTERED HEREFORD CATTLE  
and HAMPSHIRE SWINE

Some of the leading blood lines represented in our herd

VISITORS WELCOME

INSPECTION INVITED

Cattle Government Tuberculin Tested

Hogs Cholera Immune

Farm located 8 miles east and 1 mile north of Blue Earth

Phone No. 3345

R. F. D. No. 1

BLUE EARTH, MINN.

## HIGHLAND STOCK FARM

MONSON BROS., PROPS.

SCOTCH SHORTHORN CATTLE

Herd headed by Imported Oak Bluff Model, 862307

and

POLAND CHINA HOGS

R 2, Blue Earth

Phone 3306

## G. A. SCHNEIDER & SONS

Breeders of

Shorthorn Cattle and Poland China Hogs

Stock for sale at all times

Route 2

Blue Earth, Minn.

## Deaver & Steiner Music Company

"Where music is the sweetest"

The Largest and Only

EXCLUSIVE MUSIC STORE IN FARIBAULT COUNTY

Blue Earth.

Minn.

[illegible]

Minnesota Corn Belt Lands  
IMPROVED AND UNIMPROVED  
Farms in Minnesota, Montana and the Dakotas

INSURANCE OF ALL KINDS

W. A. CUSICK  
EASTON, MINNESOTA

Highest Grade Musical Instruments  
Raudenbush & Sons Pianos and Player Pianos

ALL MAKES OF PHONOGRAPHS

W. A. CUSICK  
EASTON, MINNESOTA

WHEN YOU THINK OF

## F. A. DIETZ & COMPANY

Think of HARDWARE, ENGINES, FARM MACHINERY and FARM SPECIALTIES

Easton :: Minnesota

## DEAVER & STEINER MUSIC COMPANY

*"Where Music is the Sweetest"*

The Largest and Only EXCLUSIVE MUSIC STORE in Faribault County

Blue Earth :: Minnesota

## EASTON HARDWARE COMPANY

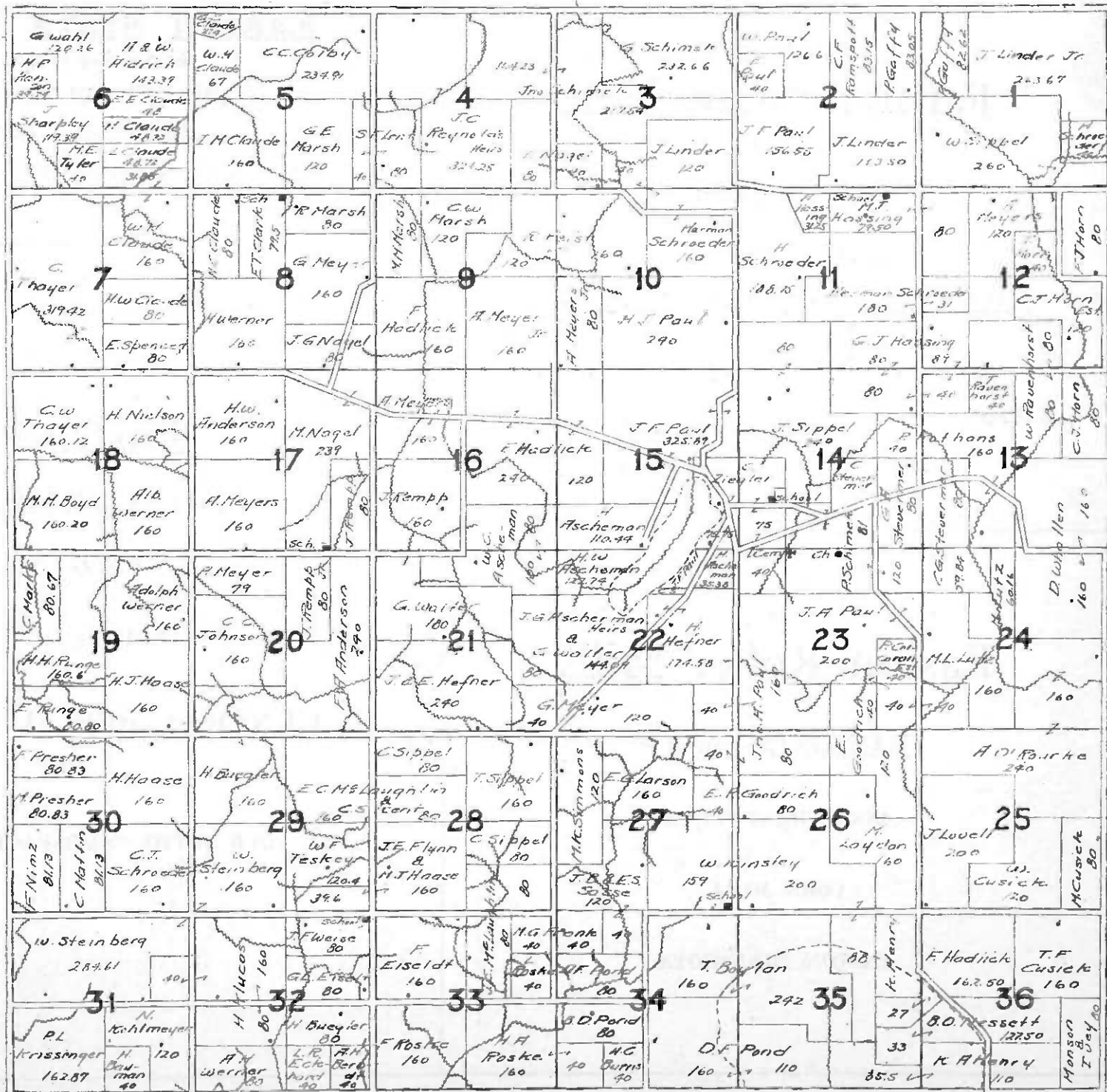
Ebert and Bachtle, *Proprietors*

Hickory Hardware : Tools : Cutlery : Paints : Stoves

Easton, Minnesota



# T.103 N. BARBER R.26 W.



# Farmers State Bank

of EASTON

A Home Institution

GENERAL BANKING

REAL ESTATE, LOANS AND INSURANCE

WE SERVE YOU AND PROTECT YOUR INTERESTS

EASTON

MINNESOTA

# Easton Roller Mills

EASTONIA FLOUR

BUCKWHEAT FLOUR

CORN MEAL

EASTON, MINNESOTA

# Easton State Bank

Established 1904

THE OLD RELIABLE

"We do for you everything that a good Bank ought to do"

LET US SERVE YOU

EASTON

MINNESOTA

John J. Bezdichek

Joe J. Zelezny

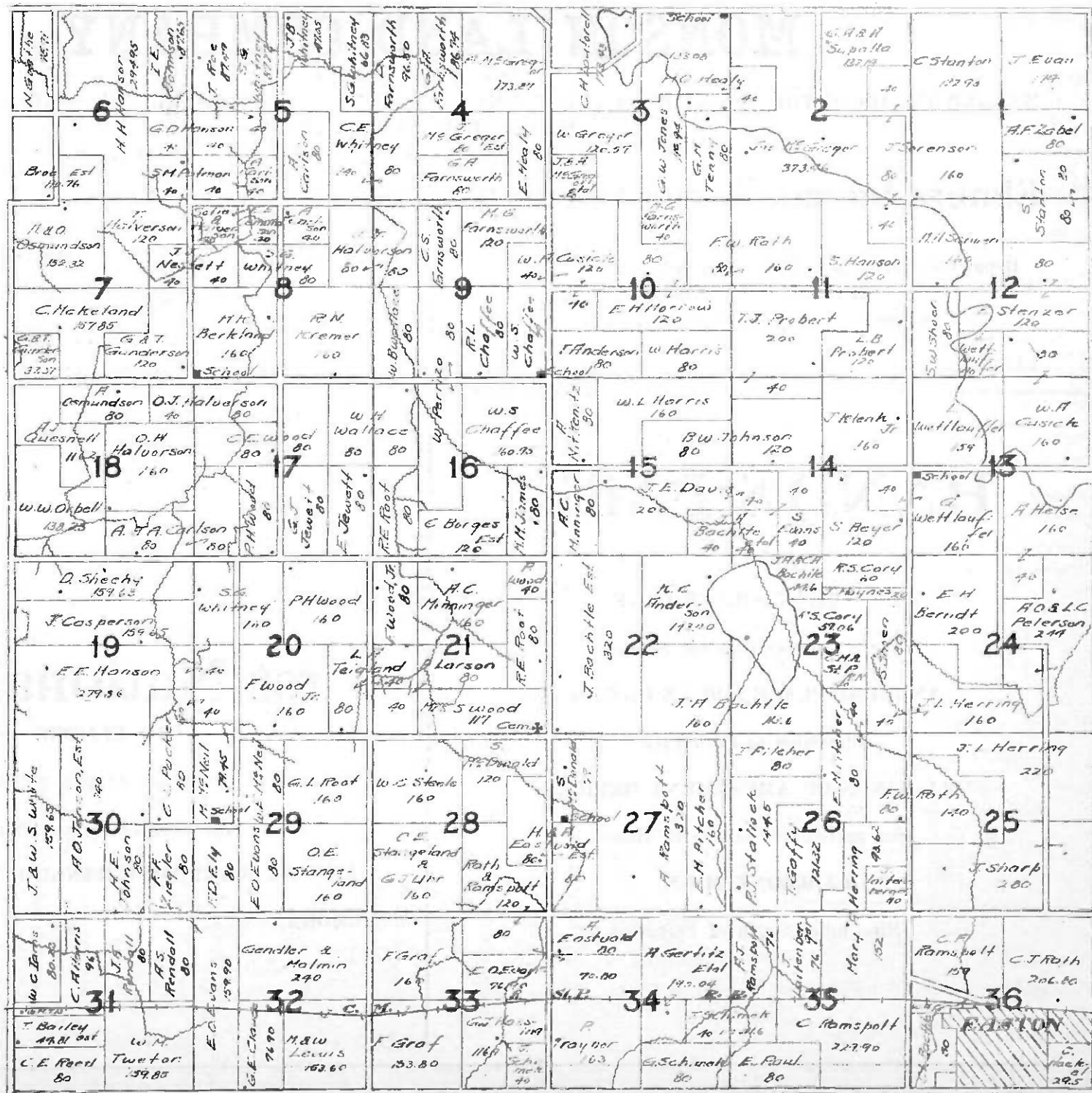
# Easton Mercantile Co.

DEALERS IN

GENERAL MERCHANDISE

OUR MOTTO—"SATISFACTION"

# T.104 N. LURA R.26 W.



# MONSON LAND COMPANY

ELMORE, MINNESOTA

WE ALWAYS HAVE THE BEST CORN LAND FARMS

FARMS BOUGHT, SOLD AND EXCHANGED

WHEN IN THE MARKET SEE US

## Elmore Storage Battery Station

Tom Swanson, Manager

Repairing, Recharging, Rebuilding All makes of Storage

Batteries Our Specialty

Agent for the Exide Storage Battery

ELMORE,

MINNESOTA

## Deaver & Steiner Music Company

"Where music is the sweetest"

The Largest and Only

EXCLUSIVE MUSIC STORE IN FARIBAUT COUNTY

BLUE EARTH,

MINNESOTA

## HAND'S PARK

on

BEAUTIFUL SILVER LAKE

Special Amusements for Sunday

AN IDEAL PLACE FOR AN OUTING

Admission to Park Free

ALL KINDS OF AMUSEMENT DEVICES

For particulars ask E. R. Hand

FAIRMONT, MINN.

Nine miles South of Fairmont

## First National Bank

OF ELMORE

Capital and Surplus \$65,000.00

The Bank of Personal Service

WE WANT YOUR BANKING BUSINESS

ELMORE,

MINNESOTA

# ELMORE





# Max Ziegler Tire and Battery Shop

## FIRST CLASS TIRE AND TUBE REPAIRING

### Full Supply of Tires and Tubes on Hand at All Times

Blue Earth, Minnesota

### FARMER'S NATIONAL BANK

Capital and Earnings \$80,000.00

Under the following Management

Robert Moore, Pres., Frank E. Putnam, Vice-Pres. and Att.

F. H. Davis, Cashier, H. D. Paschke, Asst. Cashier

J. R. Snyder and William Kohlmeyer, Directors

BLUE EARTH,

MINNESOTA

FOR BETTER HARDWARE

SEE

### Malmin Hardware Company

BLUE EARTH,

MINNESOTA

SORENSEN, SPECIALIST ON  
ADVERTISING

Fairmont

Minn.

The folk in this bank take a happy pride in being of genuine helpfulness to you here.

It matters little what banking service you require—you will find it here.

We invite you to use any and all of the facilities at this bank when and as you please.

### FIRST NATIONAL BANK

BLUE EARTH, MINN.

### DEAVER AND STEINER MUSIC COMPANY

"Where music is the sweetest"

The Largest and Only

EXCLUSIVE MUSIC STORE IN FARIBAULT COUNTY

BLUE EARTH,

MINNESOTA

25  
STORES

SERVICE

25  
STORES

### Kraft-Rosewall Company

SOUTHERN MINNESOTA'S

LEADING CLOTHIERS

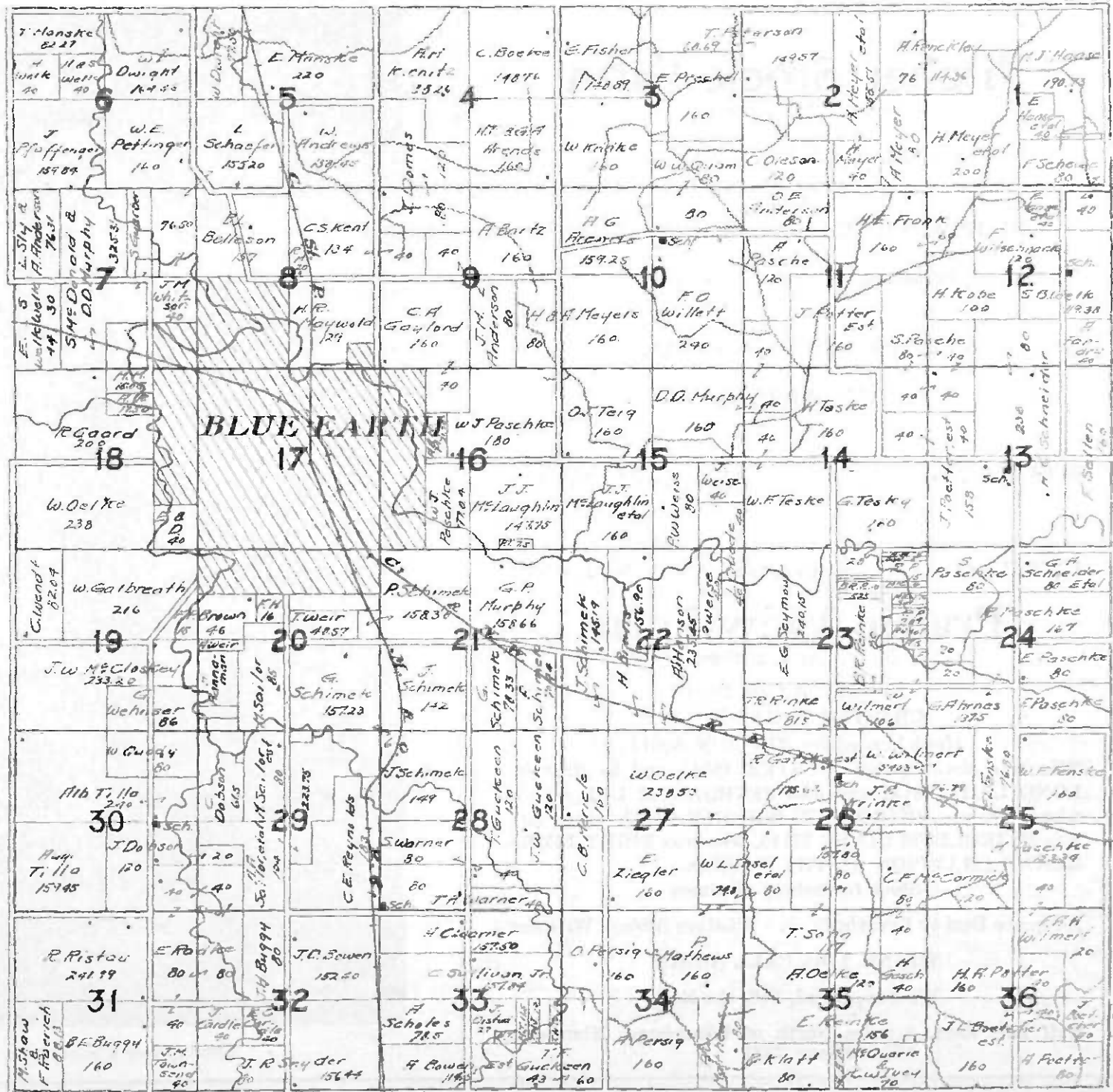
BLUE EARTH

25  
STORES

QUALITY

25  
STORES

**T.102 N. BLUE EARTH CITY R.27W.**



# Pitcher Stock Farm

Wm. Pitcher, Prop.

BLUE EARTH, MINN.

THE HOME OF THE BEST BRED HEREFORDS

Double Standard Polled Herefords

When in the market for Thoroughbreds

SEE OUR HERD

BLUE EARTH,

MINNESOTA

H. W. Cross

M. B. Cross

W. L. Cross

## Prairie View Farm

M. B. Cross & Sons

Breeders of Pure Bred

CHESTER WHITE HOGS

Herd headed by BIG BEN 59511

Who was sired by BIG BUSTER 46015 and by dam by LONG LADY 98152 and also PETROLEUM LAD 83189, whose sire was PETROLEUM WONDER 52429, whose sire was PETROLEUM GIANT 37115, who was EIGHT TIMES GRAND CHAMPION OF THE WORLD.

Stock for Sale at all times

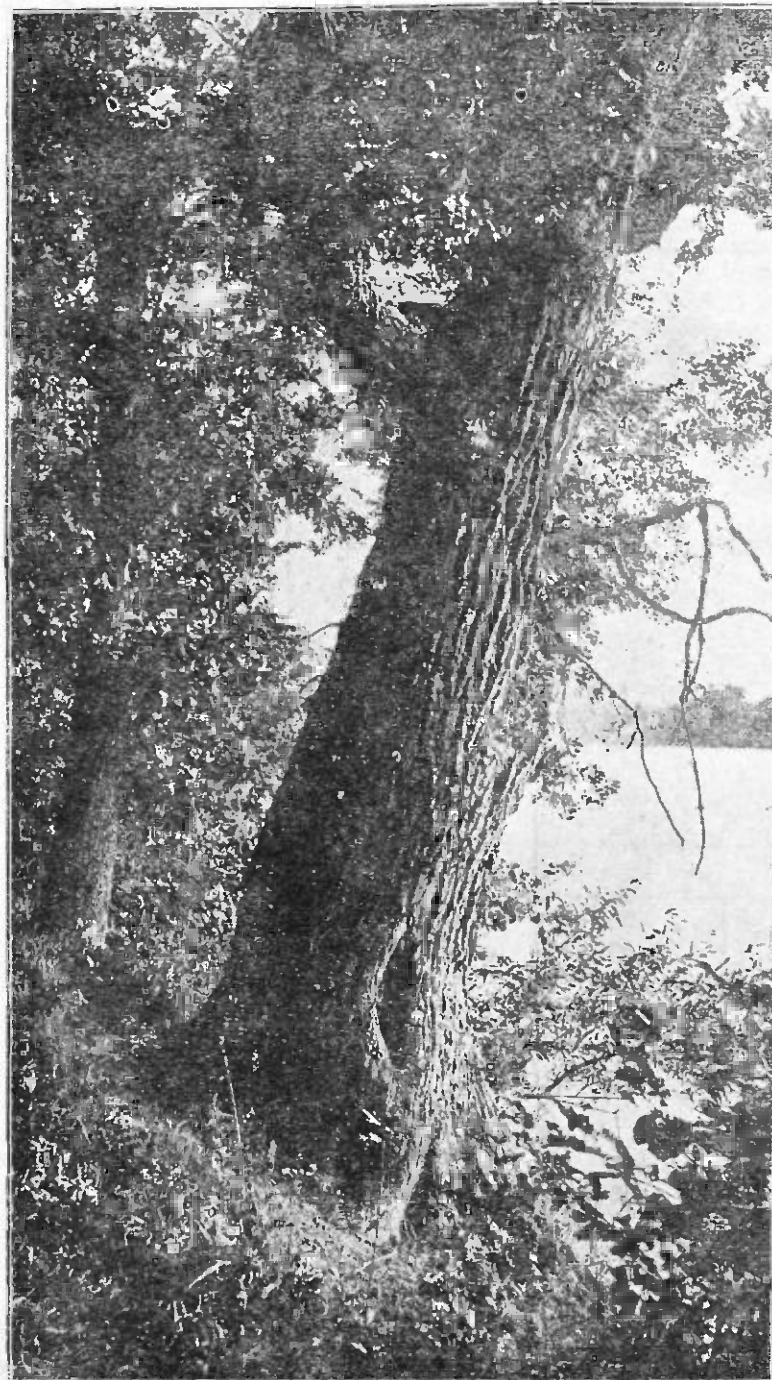
A Square Deal to Everybody

Visitors Always Welcome

THANK YOU, CALL AGAIN

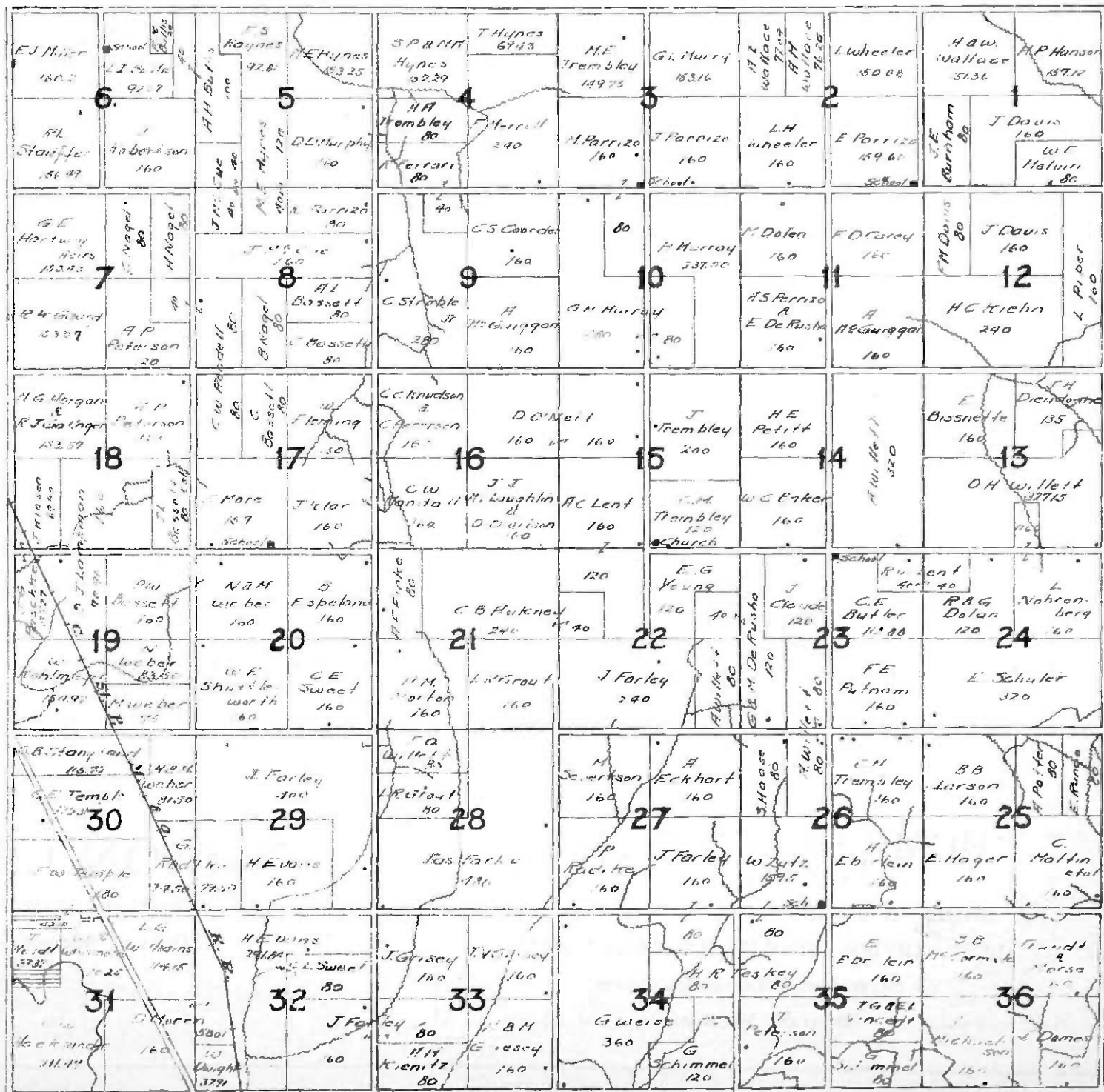
We Buy, Breed, Sell, the Best

Half mile East, 3 miles North of Winnebago, Minnesota  
Phone 2351



One of nature's beauty spots

# T.103N. PRESCOTT R.27W.



# THE DELAVAN GARAGE

GENERAL REPAIRING—TIRES—GREASES—OILS—ACCESSORIES  
DELAVAN, MINNESOTA

## FARMERS STATE BANK

of DELAVAN

THE BANK THAT TREATS YOU RIGHT WE WANT YOUR BUSINESS  
Delavan, Minnesota

## A. O. JENSEN & SON

Established 1896

Delavan, Minnesota

SERVICE QUALITY RELIABILITY  
GARAGE—TWO STORES—FARM IMPLEMENTS

## SECURITY STATE BANK

SAFETY—SERVICE—SILENCE

WE DO A GENERAL BANKING BUSINESS

Delavan, Minnesota

## W. C. ROBERTS

We have a full line of Furniture, Carpets, Window Shades, Mouldings, and can fit out every room in your house to suit your satisfaction. A variety of styles to choose from at prices that are right. Licensed Embalmer and Funeral Director.

Delavan, Minnesota

## DELAVAN HARDWARE COMPANY

WHERE LASTING SATISFACTION FOLLOWS EVERY TRANSACTION. WHEN IN THE MARKET FOR ANYTHING IN  
THE HARDWARE LINE, SEE US

Delavan, Minnesota

Mrs. L. M. Jiranek's

## HOME RESTAURANT

of DELAVAN

HOMY IN EVERY SENSE OF THE WORD  
BEST SERVICE—BEST MEALS—BEST FOOD

We Serve Ives Delicious Ice Cream

Delavan, Minnesota

## THRON LIEN

REAL ESTATE

Delavan, Minnesota





# **CITIZENS STATE BANK**

of Guckeen

**YOUR BUSINESS IS APPRECIATED**

5% Paid on Time Deposits

**GUCKEEN, MINN.**

Peter Jensen, Pres. C. J. Swenson, Mgr. Cad Johnson, Sec.

You can realize a profit on your own business by trading with

## **FARMERS ELEVATOR CO.**

**GRAIN, COAL, TILE**

**FLOUR, FEED, SALT**

**Guckeen, Minn.**

## **JOHNSON IMPLEMENT COMPANY**

**Headquarters of AGRICULTURAL IMPLEMENTS**

**Distributors of TITAN and MINNEAPOLIS HOLT Tractors**

**Melotte and Primrose Cream Separators**

**THE FULL I. H. C. LINE**

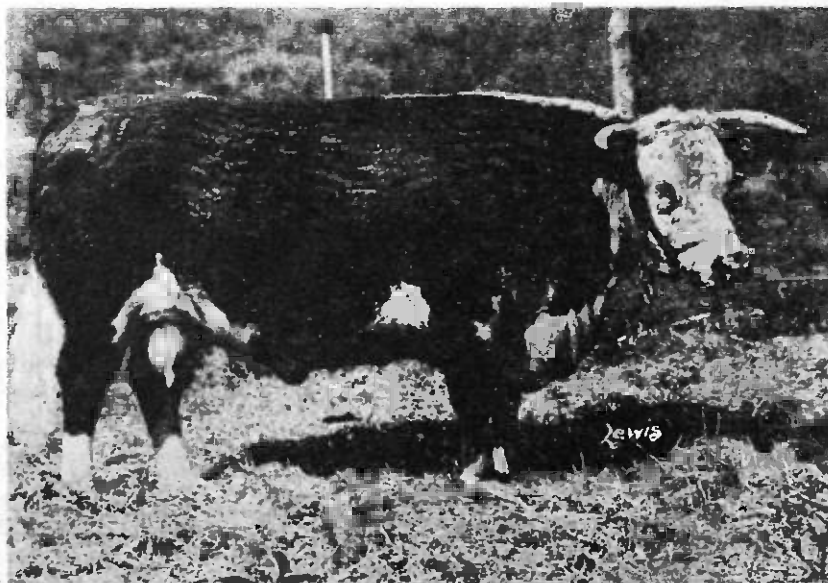
**REPAIRS**

**"One Price to All"—Our Motto**

**GUCKEEN, MINN.**

**THE LITCHFIELD SPREADERS**

## **EDWARD MOORE & SONS, Blue Earth, Minnesota**



**HEREFORDS**

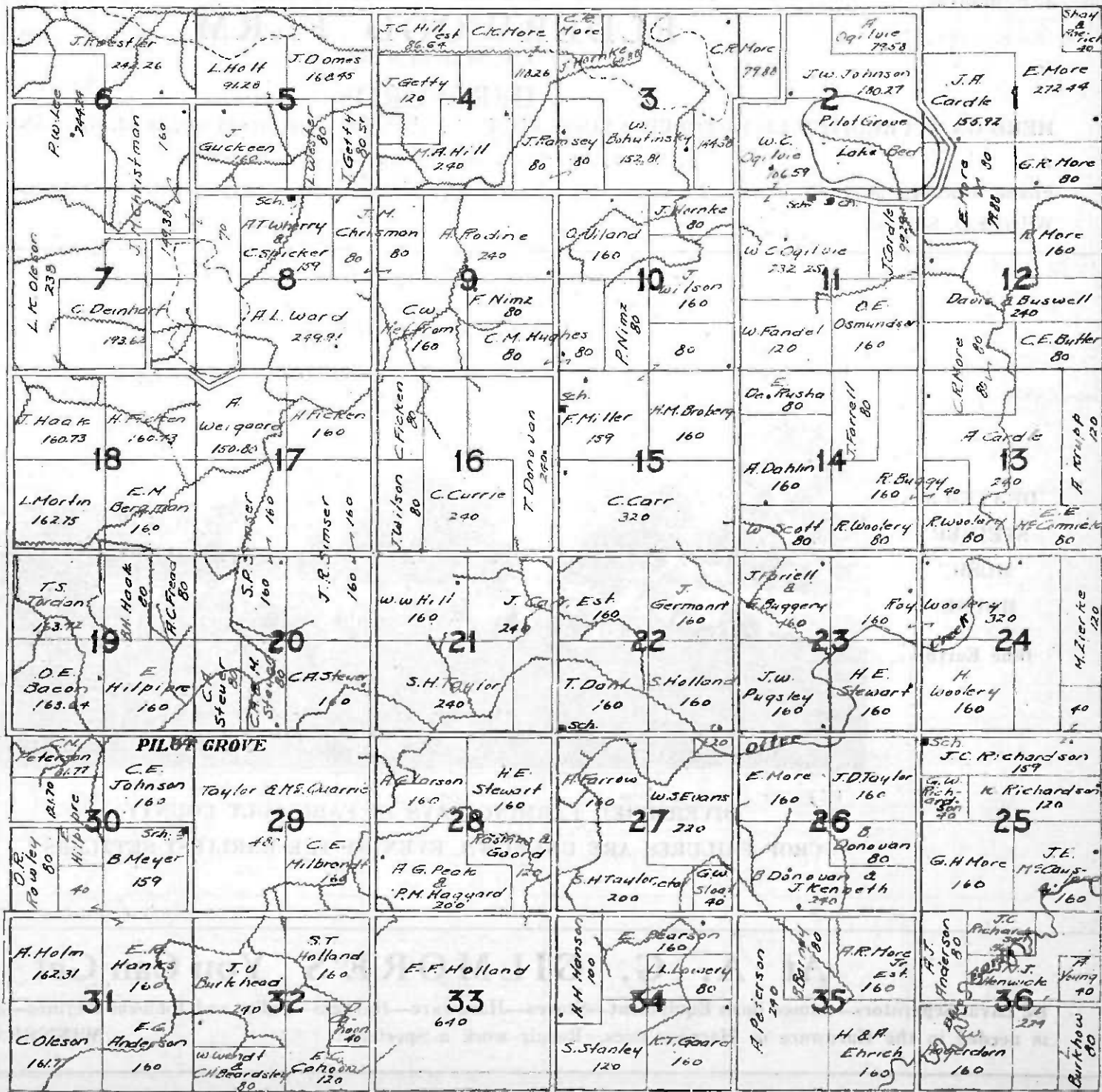
**When in need of Extra Good**

**CATTLE**

**Visit Our Herds**

**ANXIETY 4th**

# T.101N. PILOT GROVE R.28W.



J. F. Sullivan

Ralph T. Sullivan

## ELDERWOOD FARM

J. F. Sullivan & Sons

### HEREFORDS

HERD ON ACCREDITED LIST—TUBERCULOSIS FREE—STANDARD AND DISTURBER BLOOD LINES PREDOMINATE

Farm 2 miles South and 1¼ miles West of Guckeen

Phone, Guckeen 3652

GUCKEEN, MINNESOTA

Phone Blue Earth 3652

Wilfred D. Sullivan

Kevin J. Sullivan

#### A PLEASANT VIEW



DEAVER &  
STEINER  
MUSIC  
HOUSE

Blue Earth

DEAVER &  
STEINER  
MUSIC  
HOUSE

Blue Earth

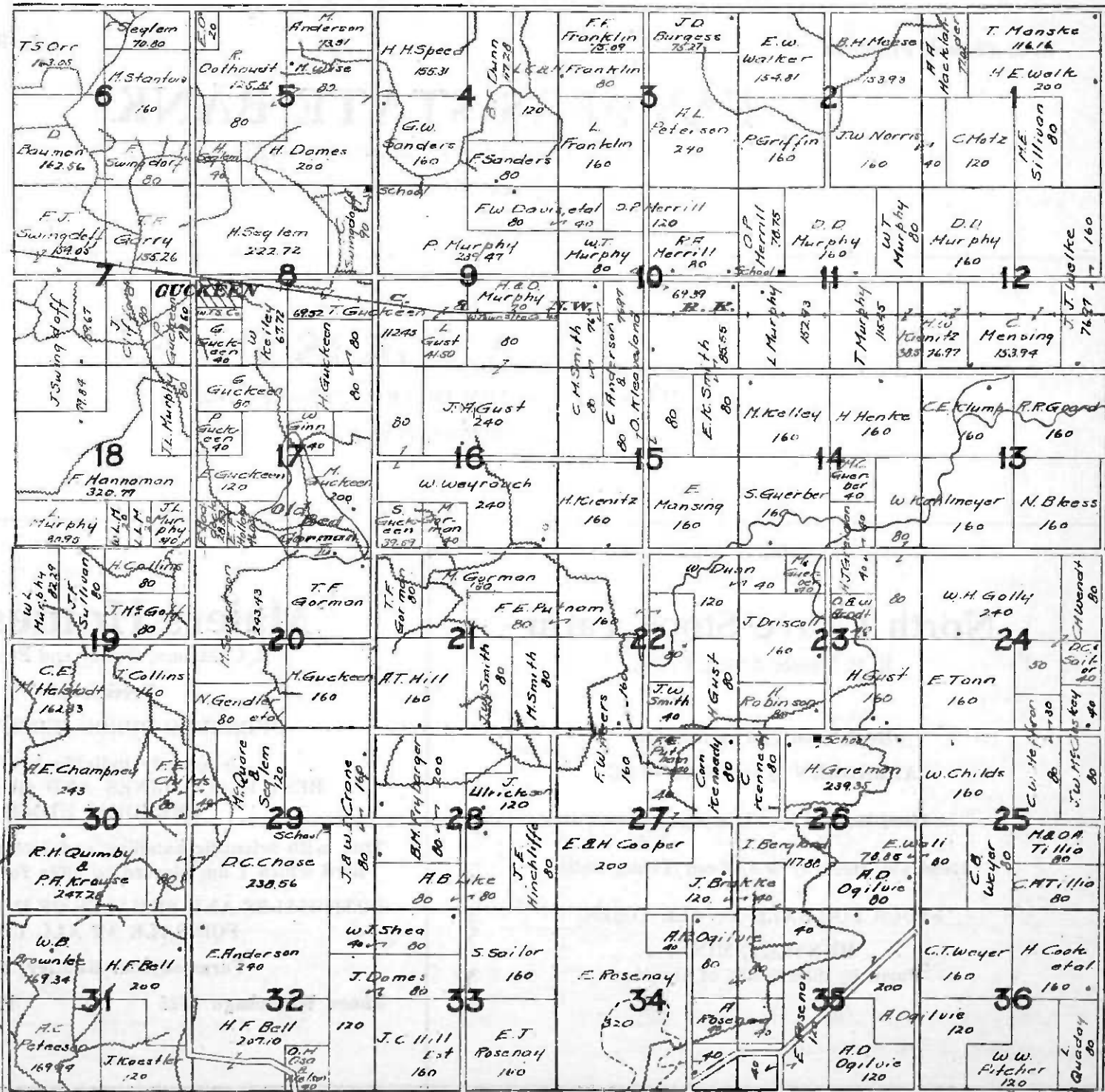
DIVERSIFIED FARMING PAYS IN FARIBAULT COUNTY  
CROP FAILURES ARE UNKNOWN, EVEN BY THE EARLIEST SETTLERS

## At A. G. GILMORE'S You Can Get

De Laval Separators—James Barn Equipment—Stoves—Hardware—Harness—Fuller and Johnson Engines—and everything that is needed in the Hardware or Harness lines. Repair work a Specialty.

WINNEBAGO, MINNESOTA

# T.102 N. JO DAVIS R.28 W.





S. J. Chance, President

L. B. Paulson, Cashier

# FARMERS STATE BANK

WE WANT YOUR BANKING BUSINESS

Huntley, Minnesota

## A. E. ANDERSON

HARDWARE—FARM IMPLEMENTS—REPAIRS

Huntley, Minn.

### North Grove Stock Farm

B. P. Messer & Son, Props.

Registered and Accredited

ABERDEEN ANGUS CATTLE

Herd Headed by Plain Sight Elsop

Head you Herd by one of our Young Bulls

STOCK FOR SALE AT ALL TIMES

HUNTLEY, MINN.

Farm  $\frac{1}{2}$  mile South of Huntley

### Maiers Homestead

E. C. Maiers, Owner and Proprietor

Breeder of

PUREBRED DUROC JERSEY HOGS

Using only individuals of the  
BEST BLOOD LINES AND QUALITY FOR  
BREEDING STOCK

This, with scientific handling and feeding has developed a  
herd which I am pleased to offer for your inspection.

BOTH MALES AND FEMALES OF INDIVIDUAL MERIT  
FOR SALE AT ALL TIMES

Farm adjoins Huntley, Minn.

Phone Winnebago 4825

Phone Huntley 4825

This is a detailed land ownership map of a township in Minnesota, likely Winnebago County. The map is divided into 36 numbered sections. Each section contains information about land parcels, including owner names and acreage. The map is oriented with North at the top. A large area in the upper right is labeled 'WINNEBAGO'. The map shows a grid of land parcels, with some sections containing multiple parcels. The names of the owners are written in various fonts and sizes, often with the acreage of the parcel. The map is a historical document, showing land ownership in the early 20th century.

**Section 1:** W.H. Gilborne 160, J.N. Jacobs 233.99, A.D. Hynes 318.66, C. G. Dunn 152.74, 88.61, C. G. Dunn 152.74, 88.61, J.N. Jacobs 233.99, W.H. Gilborne 160.

**Section 2:** J.N. Jacobs 233.99, W.H. Gilborne 160, C. G. Dunn 152.74, 88.61, J.N. Jacobs 233.99, W.H. Gilborne 160.

**Section 3:** J.N. Jacobs 233.99, W.H. Gilborne 160, C. G. Dunn 152.74, 88.61, J.N. Jacobs 233.99, W.H. Gilborne 160.

**Section 4:** J.N. Jacobs 233.99, W.H. Gilborne 160, C. G. Dunn 152.74, 88.61, J.N. Jacobs 233.99, W.H. Gilborne 160.

**Section 5:** J.N. Jacobs 233.99, W.H. Gilborne 160, C. G. Dunn 152.74, 88.61, J.N. Jacobs 233.99, W.H. Gilborne 160.

**Section 6:** J.N. Jacobs 233.99, W.H. Gilborne 160, C. G. Dunn 152.74, 88.61, J.N. Jacobs 233.99, W.H. Gilborne 160.

**Section 7:** J.N. Jacobs 233.99, W.H. Gilborne 160, C. G. Dunn 152.74, 88.61, J.N. Jacobs 233.99, W.H. Gilborne 160.

**Section 8:** J.N. Jacobs 233.99, W.H. Gilborne 160, C. G. Dunn 152.74, 88.61, J.N. Jacobs 233.99, W.H. Gilborne 160.

**Section 9:** J.N. Jacobs 233.99, W.H. Gilborne 160, C. G. Dunn 152.74, 88.61, J.N. Jacobs 233.99, W.H. Gilborne 160.

**Section 10:** J.N. Jacobs 233.99, W.H. Gilborne 160, C. G. Dunn 152.74, 88.61, J.N. Jacobs 233.99, W.H. Gilborne 160.

**Section 11:** J.N. Jacobs 233.99, W.H. Gilborne 160, C. G. Dunn 152.74, 88.61, J.N. Jacobs 233.99, W.H. Gilborne 160.

**Section 12:** J.N. Jacobs 233.99, W.H. Gilborne 160, C. G. Dunn 152.74, 88.61, J.N. Jacobs 233.99, W.H. Gilborne 160.

**Section 13:** J.N. Jacobs 233.99, W.H. Gilborne 160, C. G. Dunn 152.74, 88.61, J.N. Jacobs 233.99, W.H. Gilborne 160.

**Section 14:** J.N. Jacobs 233.99, W.H. Gilborne 160, C. G. Dunn 152.74, 88.61, J.N. Jacobs 233.99, W.H. Gilborne 160.

**Section 15:** J.N. Jacobs 233.99, W.H. Gilborne 160, C. G. Dunn 152.74, 88.61, J.N. Jacobs 233.99, W.H. Gilborne 160.

**Section 16:** J.N. Jacobs 233.99, W.H. Gilborne 160, C. G. Dunn 152.74, 88.61, J.N. Jacobs 233.99, W.H. Gilborne 160.

**Section 17:** J.N. Jacobs 233.99, W.H. Gilborne 160, C. G. Dunn 152.74, 88.61, J.N. Jacobs 233.99, W.H. Gilborne 160.

**Section 18:** J.N. Jacobs 233.99, W.H. Gilborne 160, C. G. Dunn 152.74, 88.61, J.N. Jacobs 233.99, W.H. Gilborne 160.

**Section 19:** J.N. Jacobs 233.99, W.H. Gilborne 160, C. G. Dunn 152.74, 88.61, J.N. Jacobs 233.99, W.H. Gilborne 160.

**Section 20:** J.N. Jacobs 233.99, W.H. Gilborne 160, C. G. Dunn 152.74, 88.61, J.N. Jacobs 233.99, W.H. Gilborne 160.

**Section 21:** J.N. Jacobs 233.99, W.H. Gilborne 160, C. G. Dunn 152.74, 88.61, J.N. Jacobs 233.99, W.H. Gilborne 160.

**Section 22:** J.N. Jacobs 233.99, W.H. Gilborne 160, C. G. Dunn 152.74, 88.61, J.N. Jacobs 233.99, W.H. Gilborne 160.

**Section 23:** J.N. Jacobs 233.99, W.H. Gilborne 160, C. G. Dunn 152.74, 88.61, J.N. Jacobs 233.99, W.H. Gilborne 160.

**Section 24:** J.N. Jacobs 233.99, W.H. Gilborne 160, C. G. Dunn 152.74, 88.61, J.N. Jacobs 233.99, W.H. Gilborne 160.

**Section 25:** J.N. Jacobs 233.99, W.H. Gilborne 160, C. G. Dunn 152.74, 88.61, J.N. Jacobs 233.99, W.H. Gilborne 160.

**Section 26:** J.N. Jacobs 233.99, W.H. Gilborne 160, C. G. Dunn 152.74, 88.61, J.N. Jacobs 233.99, W.H. Gilborne 160.

**Section 27:** J.N. Jacobs 233.99, W.H. Gilborne 160, C. G. Dunn 152.74, 88.61, J.N. Jacobs 233.99, W.H. Gilborne 160.

**Section 28:** J.N. Jacobs 233.99, W.H. Gilborne 160, C. G. Dunn 152.74, 88.61, J.N. Jacobs 233.99, W.H. Gilborne 160.

**Section 29:** J.N. Jacobs 233.99, W.H. Gilborne 160, C. G. Dunn 152.74, 88.61, J.N. Jacobs 233.99, W.H. Gilborne 160.

**Section 30:** J.N. Jacobs 233.99, W.H. Gilborne 160, C. G. Dunn 152.74, 88.61, J.N. Jacobs 233.99, W.H. Gilborne 160.

**Section 31:** J.N. Jacobs 233.99, W.H. Gilborne 160, C. G. Dunn 152.74, 88.61, J.N. Jacobs 233.99, W.H. Gilborne 160.

**Section 32:** J.N. Jacobs 233.99, W.H. Gilborne 160, C. G. Dunn 152.74, 88.61, J.N. Jacobs 233.99, W.H. Gilborne 160.

**Section 33:** J.N. Jacobs 233.99, W.H. Gilborne 160, C. G. Dunn 152.74, 88.61, J.N. Jacobs 233.99, W.H. Gilborne 160.

**Section 34:** J.N. Jacobs 233.99, W.H. Gilborne 160, C. G. Dunn 152.74, 88.61, J.N. Jacobs 233.99, W.H. Gilborne 160.

**Section 35:** J.N. Jacobs 233.99, W.H. Gilborne 160, C. G. Dunn 152.74, 88.61, J.N. Jacobs 233.99, W.H. Gilborne 160.

**Section 36:** J.N. Jacobs 233.99, W.H. Gilborne 160, C. G. Dunn 152.74, 88.61, J.N. Jacobs 233.99, W.H. Gilborne 160.

# THE FOSTER LAND COMPANY

THE LAND MEN

Winnebago, Minnesota

FARM LANDS A SPECIALTY

LANDS BOUGHT, SOLD AND EXCHANGED

Will Trade you what you Want for what you Don't Want

---

## FIRST NATIONAL BANK

OF

Winnebago, Minnesota

---

## FAKTOR GARAGE

F. J. Faktor, Prop.

Phone 202

Batteries Recharged and Repaired—Gasoline and Oils—Repairing—Welding—Overhauling  
OVERLAND CARS—FIRESTONE TIRES—ACCESSORIES Winnebago, Minn.

---

FARIBAULT COUNTY—NEXT TO IOWA, BUT BETTER

E. S. COTHERMAN

FARM LANDS

Winnebago, Minn.

FARMS BOUGHT, SOLD, EXCHANGED

---

## Idylwild Stock Farm

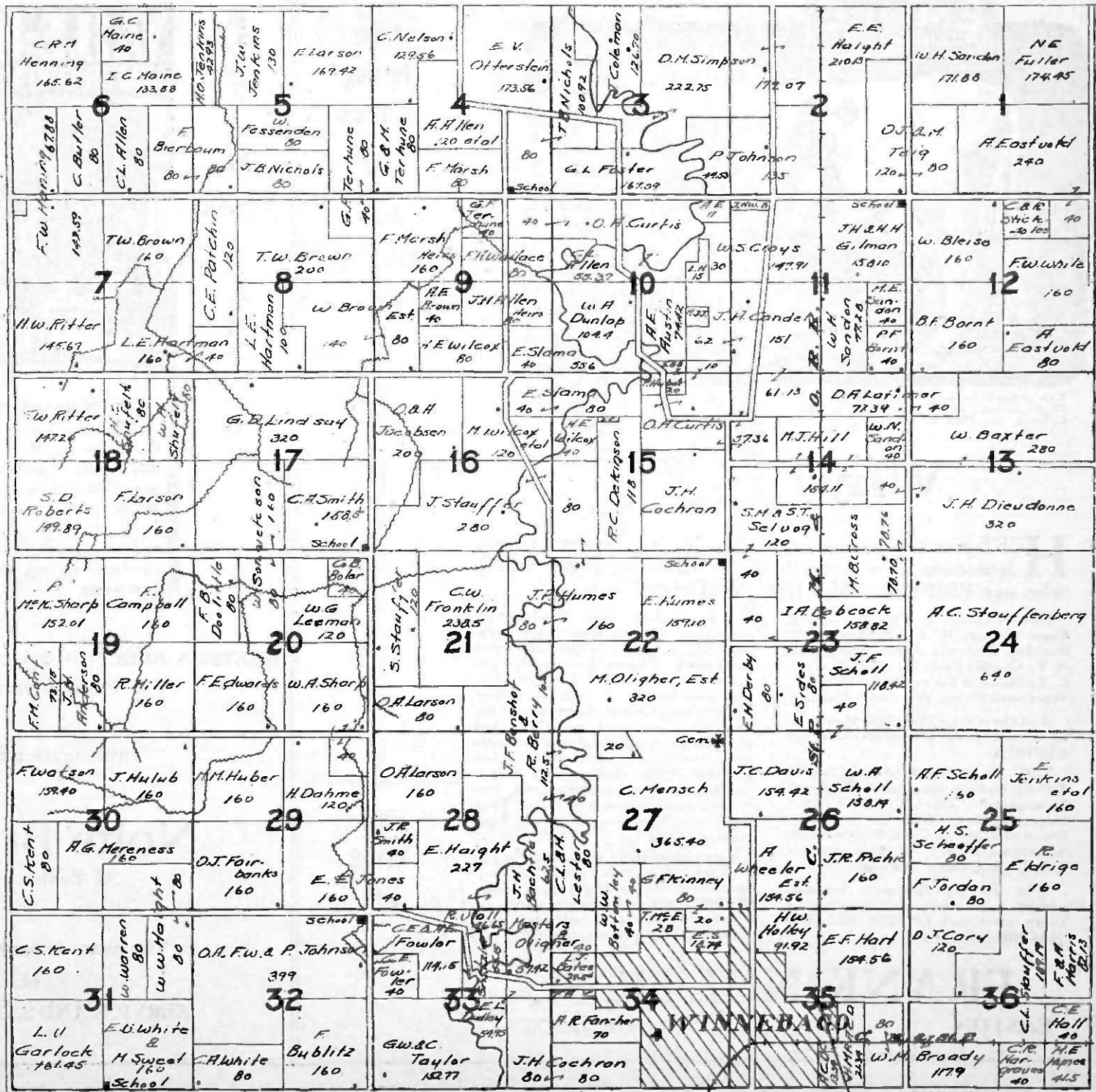
R. G. Slater, Prop.

BREEDER OF DOUBLE STANDARD POLLED HEREFORD CATTLE

Some of the leading blood lines are represented in our herd. Cattle Government Tuberculin tested. Young stock for sale at all times. When you are in the market for the best stock call on us. Farm 4½ miles west of Winnebago.

Winnebago, Minn.

# T.104 N. WINNEBAGO R.28 W.





This is Segis Fayne Johanna, World's Record Holstein Cow, 50.68 pounds of Butter in Seven Days—owned by Oliver Cabana, Jr., Pine Grove Farm, Elma Center, N. Y.

## Why?



**H**ERE are the names of a few of the many famous breeders of registered dairy cows of every breed, who use **EMPIRE MILKING MACHINES**:—

Oliver Cabana, Jr., Pine Grove Farm, Elma Center, N. Y.; Senator A. T. Fancher, Fancher Farm, Salamanca, N. Y.; Charles Pratt Estate, Glen Cove, L. I.; Sherwin Farm, Willoughby, O.; Woronook Farm, Westfield, Mass.

And these are a few of the thousands of market milk producers who use **EMPIRES**:

E. W. Smith, Richford, Vt.; Glen W. Jeffers, DeKalb Junction, N. Y.; Frank Baumgartner, Joliet, Ill.; Fred Pabst, Oconomowoc, Wis.; C. P. Fisher, Owatonna, Minn.; Chas. McFrederick, Jerusalem, Ohio; F. M. Helm, Fresno, Cal.; C. H. Conrey, Durango, Colo.

Why do the foremost breeders and the most successful dairymen of every class use **EMPIRE MILKING MACHINES**?

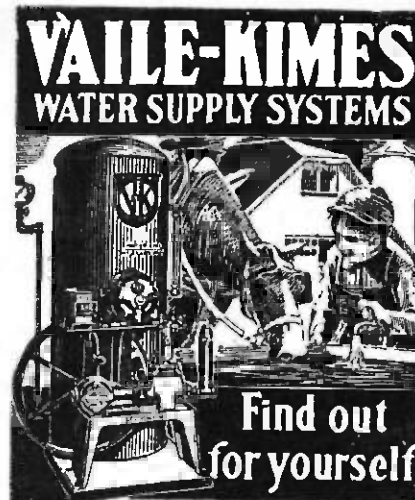
The reasons are these: Empire Milking Machines solve their labor problems and at the same time safeguard their cows. They milk uniformly—the same way every day. They lengthen the cow's period of lactation. They make it possible for one man to do the work of three or four hand milkers, thus saving many times their cost in wages in a remarkably short time. They produce better, cleaner milk than is possible by hand milking—and frequently increase the milk flow. They work equally well on easy and hard milking cows.

If you're milking more than eight cows you will want an Empire Milker—you need it. Our factory is over-crowded with orders, so get in touch with us at once—investigation will place you under no obligation whatever.

Power  
Farming  
Equipment  
and  
Farm  
Implements

THE  
KOVAR  
LINE

HEATING  
AND  
PLUMBING



### MODERNIZE YOUR HOME

with running water. For 30c a month a Vaile-Kimes Water Supply System will furnish a never failing supply of pure fresh water under 50 lbs. pressure. Water to keep the lawn and garden fresh and green, to clean the car; water for every household use. Come in or telephone; we will gladly estimate on your needs.

ELECTRICAL  
EQUIPMENT

WESTERN ELECTRIC FARM LIGHTING PLANTS  
*The Plant with the Power*

Investigate and Invest

**Nolte Brothers**  
of Easton, Minn.

The name is your guarantee  
of  
SERVICE AND SATISFACTION

**FRANK NOLTE, Sr.**  
EASTON 4121 MINNESOTA



O. D. Ackerman

W. Dean Ackerman

## Oakland Stock Farm

O. D. Ackerman & Son, Props.

Registered and Accredited  
**ABERDEEN ANGUS CATTLE**

Sires of unusual quality and breeding. The females of the herd represent some of the best blood lines and are the result of careful selection and years of constructive breeding.

Inspection Cordially Invited

All Correspondence given Prompt Attention

Farm located on North side of Rice Lake, 6 miles South of Wells, on Pershing Highway

Klester No. 3-70

Telephones

Wells No. 4751

## The Ledebur Yard

E. H. Ledebur, Prop.

BLUE EARTH, MINN.

Dealers in

Lumber and other building material, Fuel, Chicago Red Top and Ankorite Steel Post, Keystone Square Deal Wire Fencing, Burnham Combination Hog and Basket Racks, O. K. Line of Hog and Chicken Waterers, Sewer Pipe and Drain Tile

**YOUR BUSINESS IS GREATLY APPRECIATED**

Phone No. 48

## THE WATSON STOCK FARM

James A. Watson, Prop.

**DOUBLE STANDARD POLLED HEREFORDS**

Herd headed by  
**JIM DARLING**

a grandson of Polled Prince

**YOUNG BULLS FOR SALE**

**POLLED PLATO AND POLLED PEACH STRAINS**

Winnebago, Minn.

## CRYSTAL SPRINGS STOCK FARM

L. U. Garlick, Prop.

**POLAND CHINA HOGS AND SHORTHORN CATTLE**  
are the best to buy for Breeding Purposes

**SEE MINE FIRST**

Winnebago

Phone 3635

Minnesota

# LEUTHOLD & JOHNSON

SOUTHERN MINNESOTA'S AND NORTHERN IOWA'S LEADING CLOTHIERS

Blue Earth, Minnesota

Tires, Tubes and Accessories—Oils and Greases

Expert Repair Work—Work Guaranteed

## GROTH'S TIRE SERVICE STATION

A. E. Groth, Prop.  
STANDARD TIRES AND TUBES  
COLE BATTERY STATION  
USED CAR EXCHANGE AND REPAIR WORK  
Blue Earth, Minnesota

## D. V. MURPHY

DODGE BROTHERS—OAKLAND  
NASH AUTOMOBILES AND TRUCKS

Blue Earth

Minn.

## First National Bank

Wells, Minn.

Statement showing increase of Resources

May 19, 1893	\$175,514.03	August 1, 1913	745,345.88
August 15, 1903	348,280.52	Aug. 31, 1918	1,150,184.44
July 14, 1908	601,662.61	June 30, 1920	\$1,529,983.91

We make farm loans at the lowest prevailing rates  
We pay 5 per cent interest on Time Certificates of Deposit

### OFFICERS

C. H. Draper, Pres., M. J. Phil, Vice-Pres., Geo. L. Schmitz,  
Cashier, C. F. Bundy, Asst. Cashier, E. E. Roesler, Asst.  
Cashier, G. B. Matthies, Asst. Cashier.

### DIRECTORS

James H. Quinn, C. H. Draper, E. A. Siddall, M. J. Phil,  
E. O. Oren, Matt Olson, Geo. L. Schmitz, D. L. Morse,  
H. Gilbertson